



PARKS ADVISORY COMMITTEE AGENDA



March 11, 2024

6:00pm Public Meeting Session: Hybrid (Remote & In-Person)
Customer Service Center – 3050 N Delta Hwy., Eugene
Goodpasture Room

Members: Greg Hyde (Chair), Mike Allen (Vice-Chair), Julie Daniel, Timothy Foelker, Reilly Newman,
Darlene Raish, Richard Vasquez

PAC Meeting

- I. **Introductions** – (5 min.)
- II. **Public Comment** – (up to 10 min.)
- III. **Large Events Oversight Committee** – (up to 15 min.)
- IV. **Assignment Review** – (5 min.)
- V. **Review of Meeting Summary** – All (5 min.)
- VI. **New Business** (20 min.)
 - 1) Levy Cooperative Projects
 - 2) Levy Conservation Projects
 - 3) Levy Project Prioritization
 - 4) HBRA Re-opening Celebration
- VII. **Old Business** (5 min.)
 - 1) Recreational Immunity
- VIII. **Staff & Committee Updates/Reports** – (10 min.)
 - 1) Equity Survey Results
 - 2) Covered Bridges
 - 3) 3-Mile Prairie
- IX. **Open** – All (5 min.)
- X. **Operations Report** - (5 min.)
- XI. **Meeting Wrap-up/Assignments** – (5 min.)
- XII. **Adjourn**

2024 Meeting Dates:

JANUARY 22	MAY 13	SEPTEMBER 9
FEBRUARY 12	JUNE 10	OCTOBER 14
MARCH 11	JULY NO MEETING	NOVEMBER 18
APRIL 8	AUGUST NO MEETING	DECEMBER 9

Lane County Parks Advisory

February 12th, 2024

Meeting Summary

This written indexed summary of minutes is provided as a courtesy to the reader. The recorded minutes created pursuant to ORS 192.650(1) are the official minutes of this body under Oregon law.

The recorded minutes are available on the Parks Advisory Committee website:

<https://www.lanecounty.org/cms/One.aspx?portalId=3585881&pageId=4279856>

Members Present: Greg Hyde, Mike Allen, Darlene Raish, Julie Daniel, Reilly Newman, Timothy Foelker, Richard Vasquez

Members Absent: None

Staff Present: Brett Henry, Ed Alverson, Jodi Low, Kylee Tupes

Guests Present: Dan Hurley, Jason Blazar, Alan Murphy

Public Members: None

Meeting is called to order at 6:03 PM by Greg Hyde

DRAFT

00:01:38 Introductions

00:02:45 Public Comment

- None

Assignment Review

- Send Mike Allen a waiver for insurance and information that will allow minors to volunteer with Lane County Parks.
- Follow up on additional volunteer opportunities.
- Provide an update on the Hileman Landing floodplain restoration project.
- Send Committee final copy of the Goals and Accomplishments by the end of the day on the 26th of January.

00:03:01 Review of Meeting Summary

- Mike Allen moved to approve the meeting minutes with the addition of "insurance waivers" under the discussion of 3-Mile Prairie. Tim Foelker seconded the motion. Motion passed unanimously.

00:03:16 New Business

1. Sheriff's Mounted Posse Lease

- Presentation from Alan Murphy with the Sheriff's Mounted Posse. Please see Meeting Materials.
- Richard Vasquez motioned to recommend that the Board of Commissioners vote to approve the lease; Darlene Raish seconded; motion passed unanimously.

2. HBRA North Bottomlands Universal Access Trail Plans

- Presentation from Jason Blazar with the Friends of Buford Park. Please see Meeting Materials.

00:48:57 Old Business

1. Volunteer Waiver Process

- Jodi presented information regarding requirements for minors to volunteer within Parks.

01:02:36 Staff & Committee Updates/Reports

1) Ice Storm Recovery Update

- Began with 30 closed parks. There are currently 7 closed parks with hazardous debris clean-up underway.

2) Volunteer & Communication Program – Goals & Accomplishments

- Presentation from Volunteer & Marketing Coordinator Jodi Low. Please see Meeting Materials.

3) Water & Sewer Feasibility Report

- Please see Meeting Materials for the detailed report.

4) 3-Mile Prairie

- No updates at this time.

01:34:16 Open

- Add the Covered Bridge Subcommittee on the agenda for the next meeting.

01:38:00 Operations Reports

- Ice storm clean-up continues, debris removed from each park opened.

01:38:21 Meeting Wrap-up/Assignments

- Correction on the minutes. Add the words "insurance waivers" to the 3-Mile Prairie discussion.
- Consider utilizing electronic waivers for parents to sign up their children for volunteer work.

Meeting adjourned at 7:43 PM

LEVY COOPERATIVE GRANTS

Recipient	Amount	Levy Category	Levy Type	Project/Program	Short Description
Mount Pisgah Arboretum	\$500,000	Special Projects	Environment Education with Mt. Pisgah Arboretum	Nature Education for All	Educator, bilingual walks, forums, and youth scholarships
Friends of Buford Park	\$180,000	Special Projects	Cooperative Project: Habitat Restoration	General Operating Support	Implementation of the HBRA Habitat Management Plan
McKenzie River Trust	\$150,000	Special Projects	Cooperative Project: Habitat Restoration	Finn Rock Reach Restoration	Establishment of native vegetation across project area
Blue River Park & Rec	\$70,000	Special Projects	Cooperative Project: Park & Rec	Blue River Park Restoration	Installation of new vault restroom
David's Chair	\$25,000	Conservation & Education	Recreation Programming	Fixed Site Location Chair Program	Provide tracked mobility chair for public usage at Heceta Beach
Rivers to Ridges	\$50,000	Conservation & Education	Recreation Programming	Coordinator & Interactive Map	Support for regional trail system map
Health & Human Services Environmental Health	\$50,000	Conservation & Education	Interpretive Programming	Vector-Borne Disease Monitoring	Monitoring of ticks and mosquitos at Lane County Parks
McKenzie River Discovery Center	\$250,000	Special Projects	Cooperative Project: Park & Rec	McKenzie River Discovery Center	Experiential educational venue on McKenzie River
Emerald Valley Pickleball Foundation	\$500,000	Special Projects	Cooperative Project: Park & Rec	Regional Pickleball Complex	Develop a 24-court pickleball facility at LCC

Grant Summary

Grantee Legal Name: Mount Pisgah Arboretum

Grantee Entity Type: Non-profit organization

Address: 34901 Frank Parrish Rd
Eugene, OR 97405

Point of Contact Name, Email, Phone: Brad van Appel

Director@MountPisgahArboretum.org
541-747-3817

Project/Program Name: Nature Education for All

Project/Program Location: Mount Pisgah Arboretum (within HBRA)

Estimated Start Date: February 2024

Estimated Completion Date: February 2025

Amount of Award: \$500,000 (\$100,000 per year)

Grantee Bio/Short Description

At Mount Pisgah Arboretum, we believe that the more people are inspired to learn about and engage with the natural world, the more they will value and preserve it for future generations. We've been teaching people about nature since 1973. Each year, people of all ages discover the wonders of Southern Willamette Valley ecology on our guided nature tours and workshops, on our school field trips, and at our annual Wildflower Festival and Mushroom Festival.

The Arboretum is a nonprofit organization that relies on community support from hundreds of volunteers and 2000 members to maintain a 209-acre nature facility at the heart of the 2300-acre Howard Buford Recreation Area. We lease these 209 acres from Lane County. The largest portion of our funding comes from individual donations and memberships.

Grantee Mission/Vision

The mission of Mount Pisgah Arboretum is to engage people with nature through interactive learning and stewardship. We envision a future where all Oregonians feel a deep connection with their local environment and play an active role in caring for it. We recognize that promoting diversity, equity, and inclusion (DEI) is key to achieving this vision. We see DEI as directly related to our core mission and we understand that this work will be ongoing. We see the Arboretum as a resource that belongs to the whole community. We recognize that for this to be true, we need to do more than just provide equitable and inclusive access to our programs and services. We need to instill a sense of ownership among diverse populations. That means not just diverse visitors, but also diverse volunteers, members, and donors, as well as a diverse board and staff.

Project/Program Description

The Arboretum features diverse habitats from bottomland riparian forest to oak savanna, woodlands, and prairies. With nearly all of the southern Willamette Valley ecology represented on the site, the Arboretum is a fantastic outdoor classroom for all ages and levels of interest.

Mount Pisgah Arboretum provides field trips for about 3,000 K-5 students every year, and hosts about 1,000 people on guided nature walks and natural history workshops. We also work with local institutions to provide internships and to support graduate and undergraduate research.

Youth Programs

Summer Club programs run from June – August. Registration & Themes to come this Spring. Our Discovery Tour field trips for elementary classes are back this school year!

Walks & Workshops

Walks and Workshops on a multitude of subjects are offered year-round for adults and families.

Nature Exhibits

Our interactive nature exhibits provide an opportunity to take a closer look at local ecology and delve into the interconnected life of Willamette Valley habitats.

Community Science

We engage community members in contributing to scientific understanding, from the [Mount Pisgah Lichen Inventory Project](#) to annual bioblitzes associated with our [Mushroom](#) and [Wildflower](#) Festivals, as well as the international [City Nature Challenge](#).

A more complete listing of recent educational programming at Mount Pisgah Arboretum can be found in the attached 2023 Education Program Accomplishment document.

Desired Outcomes/Goals

Mount Pisgah Arboretum's place-based approach to environmental education emphasizes creating personal and community connections with the natural world, recognizing that confronting each of the various environmental crises facing the global community requires us to develop a better understanding of our local ecology and restore our kinship with nature.

We recognize that access to the outdoors is not equitable. In collaboration with community partners, we work to identify and remove barriers as we strive to create equitable access to environmental education for all ages.

Partners/Other Funding Sources

Mount Pisgah Arboretum is made possible through its partnership with Lane County Parks, and we collaborate with Lane County Parks, as well as with The Friends of Buford Park and Mt. Pisgah (a separate non-profit organization) to serve the larger Howard Buford Recreation Area.

The Arboretum also partners with more than 100 other community organizations, government agencies, and local businesses to serve the greater community. In recent years our circle of partners has expanded to include groups like Plaza de Nuestra Comunidad and the Migrant Education Program helping us do a better job of engaging Latinx members of our community, as well as Eugene Adaptive Recreation Services and Lane Independent Living Alliance as we collaborate on making nature more accessible for people with disabilities.

Our largest source of funding comes from individuals in the form of donations and annual memberships. We also rent our beautiful White Oak Pavilion to people who want the natural world to be part of their life's most significant moments. We secure grant funding for special programs like improving trail accessibility and engaging underserved people in our community. We collect some fees for services, and we hold fundraising events, like our spring Wildflower Festival, and our fall Mushroom Festival which attracts more than 4,000 people, and routinely features the largest mushroom display on the west coast curated by some of the nation's leading experts.

2023 Education Program Accomplishments

- 37 Discovery Tours reached a total of 2,243 students in school districts such as: Springfield, Bethel, Lowell, 4J, Pleasant Hill, and South Lane.
- Of these schools 17 were registered as Title 1 and received scholarships (about ½ of all schools).
- Expanded our “traditional” reach from K-5th grade to include occasional pre-K, middle, and highschool groups.
- 6 brand new Nature Guides were added for a total of 15 guides who gave ~1,700 hours of volunteer time on Discovery Tours & educational programs.
- In partnership with U of O’s Environmental Leadership Program and River Road/Camino del Rio, we served over 185 3rd-5th grade students this Spring for their “[Aves Compartidas](#)” program, which is an initiative of the Willamette-Laja Twinning Partnership.
- Our half-day Summer Club program reached 260 participants filling a niche for a more affordable alternative to other summer environmental education opportunities locally.
- With grant funding from the Upper Willamette Soil and Water Conservation District, we hired 3 Interns during the summer months that were trained to lead the Summer Club program, along with aiding in curriculum development, event preparation, and tabling.
- This Summer was our second year training and mentoring Migrant Education Program Teens to lead guided bilingual nature tours. Reaching double the participants from last year, we hosted 13 teens who completed training, then led a total of 143 Kinder-5th grade MEP elementary students this summer over the course of 3 days.
- 7 MEP Nature Guides have continued on past the summer to lead bilingual walks on weekends to families & children in topics such as: “magnificent mammals,” “river life,” “all about acorns,” and more.



- Over 50 guided nature tours on a wide variety of topics, including arranged tours with the Wednesday Wheelers, U of O Environmental Justice Conference, Transponder, Girl Scouts, and bilingual tours with Plaza de Nuestra Comunidad. In total, these tours served over 800 people.
- Four field trips for Lane Community College and University of Oregon classes.
- Five partner events with Beyond Toxics including collaboration on Boys and Girls Club summer field trips.
- Six talks to partners and community organizations.
- Revisions to interpretive signage, primarily in the Incense-cedar Exhibit.
- Facilitation of community science projects associated with our [Wildflower Festival](#) and [Mushroom Festival](#). These projects engaged hundreds of people across Lane County.
- Lead local organizer for the annual [City Nature Challenge](#)—an international community science bioblitz that engages tens of thousands globally in documenting nature in urban areas.
- Began and completed the [Mount Pisgah Lichen Inventory Project](#), a one-of-a-kind community science project engaging 30 volunteers in documenting lichens on Mount Pisgah. At completion, volunteers had identified hot spots for lichens and established one of the most thorough biogeographical accounts of lichen species at a single site in the Willamette Valley.
- Engaged six interns in education programs, from the Lichen Inventory Project to Discovery Tours and Summer Club.
- Redesigned kiosk and brochure trail maps to better convey accessibility information in both English and Spanish.
- Collaborated with Lane County Parks and the Friends of Buford Park and Mt. Pisgah on development of new kiosk information for the North Trailhead at HBRA.
- Partnered with McKenzie River Trust and other local partners to host a one-day workshop for land managers and educators on making nature more accessible for people with disabilities, led by Freya McGregor, a nationally recognized leader in the field.
- Partnered with the Upper Willamette Stewardship Network to host a one day workshop on decolonization led by Live Oak Consulting.
- Initiated hiring process for a new full-time “Environmental Educator” position, funded through the Lane County Parks levy.

Grant Summary

Grantee Legal Name:	Friends of Buford Park & Mt. Pisgah
Grantee Entity Type:	501 (c) 3 non-profit organization
Physical Address:	34639 Frank Parrish Rd. Eugene, OR 97405
Mailing Address:	PO Box 5266 Eugene, OR 97405
Point of Contact:	Jason Blazar, Stewardship Director stewardship@bufordpark.org 541.543.6869
Project/Program:	Friends HBRA Stewardship Program
Project/Program Location:	Howard Buford Recreation Area (HBRA)
Estimated Start Date:	March 11, 2024
Estimated Completion Date:	June 30, 2028
Amount of Award:	\$180,000
Proposed Award Schedule:	FY 24: \$60,000 FY 25: \$30,000 FY 26: \$30,000 FY 27: \$30,000 FY 28: \$30,000

Grantee Bio/Short Description

Based in Eugene, Oregon, the Friends of Buford Park & Mt. Pisgah (Friends) is a grass roots, volunteer powered non-profit organization with a current membership of 500 households. We collaborate with partner agencies to protect land, improve trails, restore ecosystem services, and steward rare habitats across 4700 acres. In service of this enterprise, we operate a native plant materials program. Friends is a Rivers to Ridges Partnership partner and member of the Upper Willamette Stewardship Network.

Grantee Mission/Vision

Since 1989, Friends has advocated for, marshalled resources, and collaborated with Lane County, HBRA stakeholders, and Rivers to Ridges partners to advance the protection and enhancement of native ecosystems and compatible recreation in the Greater Mt. Pisgah Area including the Howard Buford Recreation Area. Our current mission is to *nurture and restore our connection to nature.*

Project/Program Description

Today, approximately two percent of historic Willamette Valley prairie and savanna habitat remains, making it one of the most imperiled ecosystems on earth. The Howard Buford Recreation Area (HBRA) contains some of the largest remnants of these and other rare habitats. The Friends work every day to nurture and enhance native ecosystems and compatible recreation in the greater Mt. Pisgah area. Through active land management and engagement of volunteers and park users, the Friends is growing the community that works to conserve and enhance these areas.

Friends of Buford Park and Mt. Pisgah was a principal author of the HBRA's Habitat Management Plan adopted by the Lane County Board of Commissioners in December of 2018. Our Stewardship Program is

dedicated to the implementation of the supporting fifteen-year work plan. Friends work to advance progress toward achieving stated management goals to conserve a set of eight conservation targets, as well as reduce the risk of catastrophic wildfire within the park.

Fostering the next generation of land stewards is an essential component of Friends of Buford Park & Mt. Pisgah's work. To this end, Friends orchestrates an internship program that provides robust and comprehensive learning experiences year-round suited to students and budding professionals who seek career paths that lead to careers in communications, conservation, design & planning, ecosystem restoration, non-profit management, parks & natural areas management, plant material production, and recreation & trails management. We believe these opportunities should be accessible to every student regardless of identity or availability of financial resources, and that removing barriers to participation is a critical component of healthy communities and healthy ecosystems.

This general operating support grant provides essential funding to sustain the foundation of the Friends Stewardship program. A foundation built with ample training, networking, and professional development opportunities; appropriate equipment and facilities to empower staff and volunteers to nurture habitat resources; collaboration with community organizations and long term partners; and tools to engage park visitors and community members through thoughtful publications, self-guided interpretative resources, and orchestrated events and tours.

Desired Outcomes/Goals

- Acquire equipment essential to the implementation of restoration and stewardship of habitats.
- Facilitate opportunities for indigenous neighbors to engage in traditional cultural practices.
- Foster experiences where anyone interested in the stewardship of the greater Mt. Pisgah area (including the HBRA) feel welcome and able to participate.
- Improve facilities to ensure capacity to office staff, host meetings, maintain equipment, and store resources.
- Provide a learning environment for volunteers and student interns.
- Provide opportunity for ample training and networking opportunities for staff and volunteers including interns.
- Provide and share plant materials for our stewardship and restoration efforts.
- Raise funds to advance implementation of the HBRA Habitat Management Plan.
- Support staffing and volunteer resources.

Partners/Other Funding Sources

This grant compliments funding (contracts and grants) secured by the Friends to improve water quality, manage invasive species, mitigate for the effects of decades of fire suppression, restore ecosystem processes, and steward habitats.

Friends will continue to grow our membership and engage foundations as important collaborators making critical investments in the facilities that are required to sustain the restoration of our role as guest stewards of habitat and ecosystem services.

We will pair membership resources with dedicated funds to facilitate restoration projects and stewardship practices. Continued collaboration with community partners and educational institutions will lead to new funding sources and provide robust, long-term support for these essential programs.

Grant Summary

Grantee Legal Name: McKenzie River Trust

Grantee Entity Type: Nonprofit 501(c)(3) Organization

Address: 120 Shelton McMurfhey Blvd, Suite 270, Eugene, OR 97401

Point of Contact Name, Email, Phone: John Trimble, Restoration Projects Manager,
john@mckenzieriver.org, (541) 345-2799 x108

Project/Program Name: Finn Rock Reach Habitat Restoration and Boat Landing Improvements

Project/Program Location: Finn Rock Reach, Blue River, OR

Estimated Start Date: Jan 1, 2024

Estimated Completion Date: Dec 31, 2029

Amount of Award: **\$150,000**

Grantee Bio/Short Description

The McKenzie River Trust is a nonprofit land trust formed in 1989 to protect critical habitat and scenic lands in the McKenzie basin. Since 2000, our service area has included the watersheds of the Long Tom, Upper Willamette, Coast and Middle Forks of the Willamette, Umpqua, Siuslaw, and coastal streams and lakes from Reedsport to Yachats. In 2021, we expanded our coastal service area to stretch from Reedsport north to Lincoln City, and opened our first field office in Newport, OR.

Throughout our history, the McKenzie River Trust has worked with landowners and diverse partnerships to protect, forever, more than 9,000 acres of special lands in western Oregon.

The McKenzie River Trust acquires land through donation, purchase, and conservation easements to provide the greatest assurance that sensitive lands are protected in perpetuity. These lands are protected and managed by the Trust for clean water, fish and wildlife habitat, and productive natural landscapes. The Trust also holds conservation easements on privately owned property. Conservation easements are tailored to each landowner's needs, rewarding stewardship of natural resources with both protection and financial incentives.

Grantee Mission/Vision

Our Mission:

McKenzie River Trust helps people protect and care for the lands and rivers they cherish in western Oregon.

Our Vision:

Clean, free-flowing rivers. Plentiful salmon runs. Vibrant farms and forests that provide livelihoods and habitat. From the Cascade Mountains to the Pacific Ocean, we envision a future in which conservation lands are at the core of community efforts to sustain clean water, abundant fish and wildlife, and diverse natural resource economies in western Oregon.

Project/Program Description

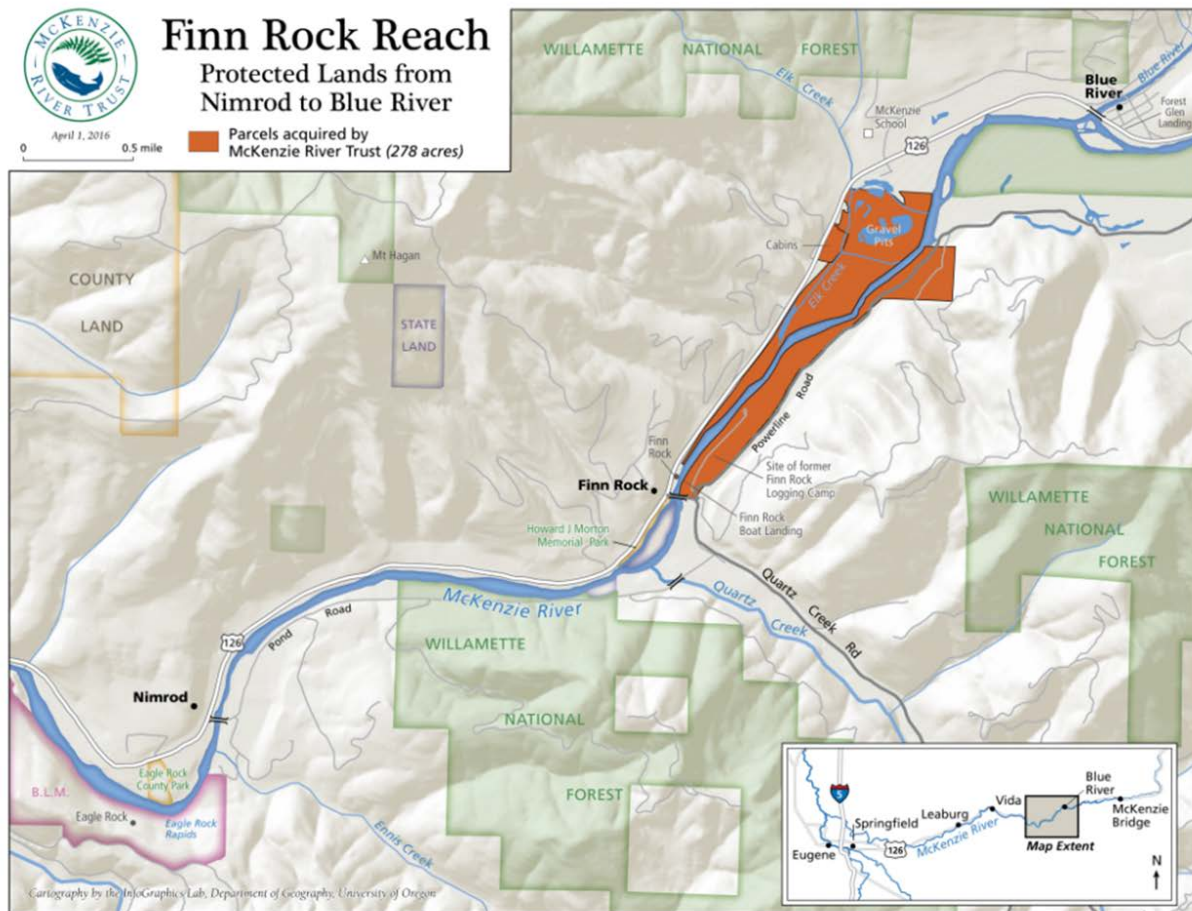


Figure 1: Finn Rock Reach property map.

Finn Rock Reach was purchased by McKenzie River Trust in 2016 while up for auction and under threat of privatization and development. Since 2016, McKenzie River Trust has worked to restore the natural habitat by reconnecting the floodplain to the river in the north half of the property, while also working to improve recreation opportunities at the Finn Rock Boat Landing in the southern end of the property.

Habitat Restoration:

Funding will be used to support habitat restoration through native vegetation establishment. Since 2021, McKenzie River Trust and partners at the McKenzie Watershed Council, Eugene Water and Electric Board, and the National Forest Service have been working to reconnect approximately 150 acres of floodplain throughout McKenzie River Trust's fee title owned property. This property was burned in the catastrophic 2020 Holiday Farm Fire leaving little live vegetation throughout the site. Partners successfully reconnected the floodplain, utilizing a Stage 8 approach in the summers of 2021 and 2023 in a phased approach, restoring connection to the downstream section first in 2021 and restoring the upstream connection in the summer

of 2023. This project will benefit Pacific Lamprey, Spring Chinook Salmon, Bull Trout, and Western Pond Turtles; all of these species have been documented in the project area.

We are requesting funding to support vegetation establishment across the project area. Since the catastrophic wildfire in 2020, the immediate area has been infested by invasive vegetation including scotch broom and blackberry. MRT is planting nearly 180,000 native plants throughout the project area in the winter of 2024. The planting plan includes more than 33 native species of trees, shrubs, and graminoids which will be strategically distributed across wetland, riparian, and upland areas mapped within the project area. Funding will help establish this vegetation by completing IVM treatments, irrigating key areas, and helping install infill plants in subsequent years.



Finn Rock Reach Restoration

2024 Planting Plan Polygons

Drone Orthomosaic September 8, 2023

0 500 1,000 Feet



Figure 2: Finn Rock Reach planting plan polygons for winter 2024



Finn Rock Reach Restoration

2024 Planting Plan Polygons

Drone Orthomosaic September 8, 2023

0 500 1,000 Feet



Figure 3: Finn Rock Reach restoration drone orthophoto from September 8, 2023

Finn Rock Landing Improvements:

Finn Rock Landing was first opened to the public in the 1940s by Rosboro Forest Products who owned the area before MRT. Since acquiring the property, we have kept our promise to continue the landing's legacy, keeping it open and free for all river users to enjoy. With ongoing support from groups including the McKenzie River Guides Association, and community volunteers, the landing continues to offer an incredible space for recreation and connection between people and water.

Finn Rock Landing is the most popular landing on the Upper McKenzie. Used by rafters, kayakers, and drift boats, the space supports public users as well as professional guides and outfitters. Since purchasing the landing, McKenzie River Trust has invested in site improvements including installing bathrooms, an informational kiosk, and creating paved ADA parking spaces. Now, we have the opportunity to make a lasting investment in the area to support outdoor recreation and tourism economies for the McKenzie Valley.

The McKenzie River in Oregon is one of the healthiest river systems in the United States, providing clean drinking water to more than 200,000 residents downstream. Apart from its critical role in community health, the McKenzie River is also renowned for its world-class fishing, rafting, and scenic views. Finn Rock Reach is a unique example of how conservation and recreation initiatives can work hand in hand for a more vibrant community.

Access to the outdoors and recreation opportunities have not always been available for use by all people. The Finn Rock Landing design includes Universal Access Design principles and increased visitor safety. With the addition of an accessible trail along the river, and increased areas to gather outside of traffic, these improvements benefit all of us. No matter our age or physical ability, we'll be able to continue connecting with this incredible river.

As the upriver McKenzie community works to rebuild a thriving community after the 2020 Holiday Farm Fire, tourism is the number one economic driver. People come to the McKenzie to raft, kayak, hike and fly fish in the iconic McKenzie wooden drift boat with a professional guide, helping to bring dollars to the upriver communities. When tourists come to enjoy the river, they also eat at an upriver restaurant, gas up at a local gas station, and may stay overnight at one of the lodges or cabins.

The Finn Rock Landing is the most popular landing on the McKenzie River, with thousands of users annually. More than 35 professional guide services and organizations use this site as a main put-in for trips, contributing to a thriving outdoor economy for Oregon's rural communities.



PROPOSED FINN ROCK LANDING ENHANCEMENTS

CAMERON
MCCARTHY
LANDSCAPE ARCHITECTURE & PLANNING

Figure 4: Schematic diagram of final conditions of Finn Rock Landing After Improvements

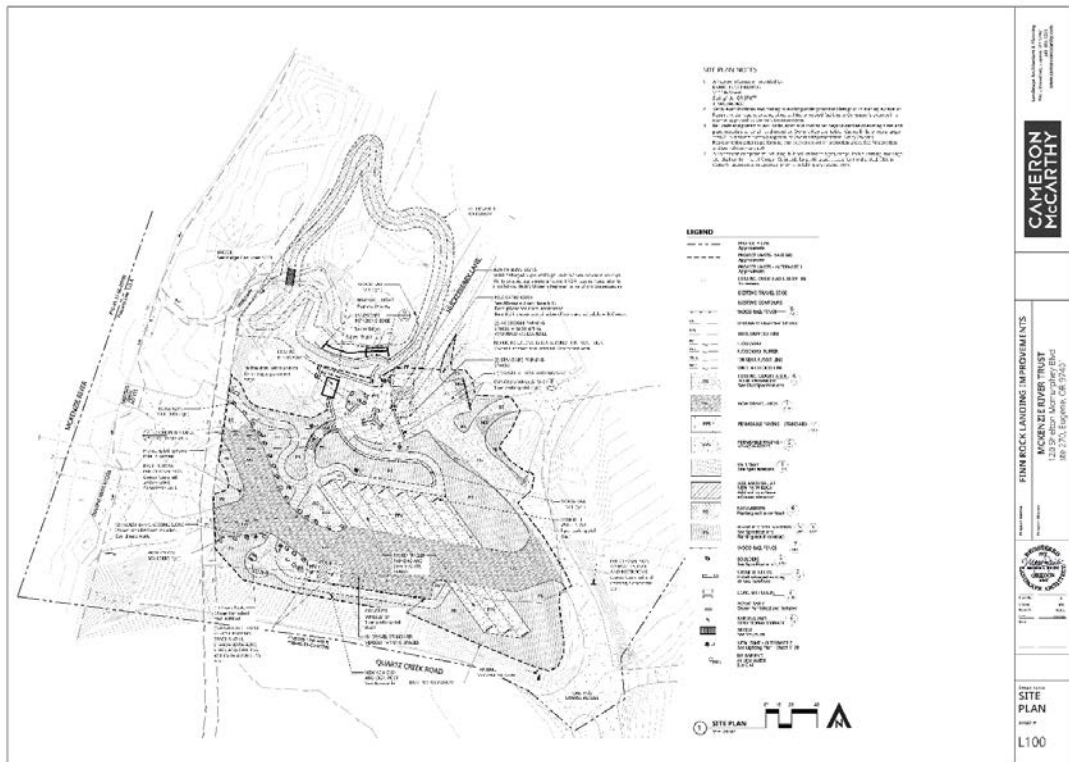


Figure 5: Site Plan for Finn Rock Landing Improvements.

Desired Outcomes/Goals

Funds will be used for:

1. Materials
 - a. Bare-root Plants and Plugs
 - b. Mulch
 - c. Boat Landing furnishings
2. Contracted Services
 - a. Boat Landing Improvements
 - b. Planting
 - c. IVM – Integrated Vegetation Management
 - d. Irrigation
3. Staff Time
 - a. Project Management
 - b. Administration

Habitat Restoration Goals:

This project will place nearly 180,000 native plants within the project area. In 2024, McKenzie River Trust will plant 87-acres of the Finn Rock Reach site to include wetland, riparian, and upland areas in the winter/spring planting window. The exact extent and location of these planting areas is outlined in Figure 5. Of these 87 acres, 70 acres are bare soil ready for a first planting, and 17 acres were planted in 2022 and need to be replanted.

The entirety of the site falls into the category of riparian floodplain forest. Within that categorization, however, three land sub-types (Wetland, Riparian, and Upland) will be planted and maintained in slightly different ways.

Wetland areas are frequently inundated areas (~4 acres) that will be planted with various native varieties of willows, sedges, and rushes.

Riparian areas are near water and have easy access to groundwater (30 acres). These areas will be planted with a 4:1 shrub to tree ratio. Trees planted will include Grand Fir, Bigleaf Maple, Red Alder, Black Cottonwood, and Western Red Cedar. Riparian Shrubs will include Red flowering currant, Twinberry, Tall Oregon Grape, Dull Oregon Grape, Osoberry, Ninebark, Thimbleberry, Salmonberry, Blue Elderberry, Red Elderberry, Spiraea, and Snowberry.

Upland areas are the drier, highest elevation zones in the project area (53 acres) with full-sun and species adapted for a warming climate. These areas will be planted with a 4:1 shrub to tree ratio. Upland trees include Grand Fir, Douglas Fir, Vine Maple, Pacific Madrone, Oregon Ash, W. Valley Ponderosa Pine, Oregon Oak, and California Black Oak. Upland shrubs will include red flowering currant, Tall Oregon Grape, Dull Oregon Grape, Salmonberry, Blue Elderberry, Serviceberry, Buckbrush, Redstem Ceanothus, Snowbrush, Oceanspray, Mock Orange, Nootka Rose, and Oval-leafed Viburnum.

Grant Summary

Grantee Legal Name: Blue River Park & Recreation District

Grantee Entity Type: Special District

Address: 51841 Rose St / PO Box 292 Blue River, OR 97413

Point of Contact Name, Email, Phone: Tony Casad, Tony@pacificflavor.net, 360-202-6836

Project/Program Name: Blue River Restroom

Project/Program Location:

Estimated Start Date: Late spring /Early summer

Estimated Completion Date: Early Fall

Amount of Award: \$70,000

Grantee Bio/Short Description

Fred Behm and his wife Dorothy moved to Blue River in 1941 and purchased local timberland. Fred was a logger and tree farmer, and during their time in Blue River, Fred and Dorothy became active members of the community and supported local causes.

The Park property started as a quarry for the county used to build the McKenzie Highway. After numerous complaints and concerns by the Blue River Residents, mostly around the use of dynamite and plans for the installation of a State Highway Commission rock crusher and adverse effects on water quality, plans were made to return the property back to the county.

In 1952, the Behm's made a generous gift to the community of a portion of their property and established Blue River Park. The following years the Park was overseen by a group of volunteer board members. In 1984 the Park became an Oregon Special District and continues to be managed by volunteers and funded by donations.

Throughout the years, all sorts of events have taken place in the Park. Little league baseball, community softball, high school track, square dancing, Easter egg hunts, as well as "Turkey Shoots" fundraisers just before the fall hunting season. A children's playground and picnic areas provided a place to relax and enjoy simple activities. The tennis court and basketball court added additional recreation for the locals and visitors. In 2014 the Ford Institute Leadership Program completed a project to create a 2 mile circular trail through the Park to the base of the Dam to the Blue River Trail.

Grantee Mission/Vision

With great challenges come great opportunities. As we approach our 70th anniversary, the Blue River Park District wants to rebuild back better than ever before, once again becoming a favorite place for locals and visitors to experience the beauty and joy of the McKenzie River Valley.

Project/Program Description

We will have a community garden, off-leash areas for large and small dogs, a disc-golf course along with informational displays highlighting Blue River's unique history. All of this in the McKenzie watershed—a natural environment unlike any other which offers the full range of

outdoor opportunities for residents and visitors alike. Our park will be open and accessible to people of all ages and in all circumstances. We will have bright colors in a warm and welcoming environment serving not just Blue River, but all the Upper McKenzie communities and the visitors we encourage to “stay and play another day.”

Desired Outcomes/Goals

Blue River Park has been a vibrant part of the upper McKenzie for more than half a century. This path of recovery and rebuilding will continue that tradition for another half century or longer. Project deliverables and outcomes include:

- A vibrant space fostering joy, fun, and community.
- Outdoor experiences and recreational activities in a peaceful setting.
- A place for families, friends, and neighbors to share experiences and laughter.
- A beautiful, well-maintained park for the communities and residents throughout the corridor.
- A gathering place for socializing, events, and celebrations that help build community.
- Strengthened community bonds to foster a sense of belonging.
- Promotes happiness, health, and strong community spirit.
- Overall enhancement for everyone in the area.

The Blue River Park has been a gem in this valley for more than seventy years. We will keep it that way.

Partners/Other Funding Sources

FEMA	Funding to replace signs, funding secured
PIERS Group	Funding request in progress
Ford Family	Matching Fund program for playground equipment



Visit blueriverpark.com for additional photos and drawings.

This project will support the establishment of native plantings with the removal and control of invasive species. Invasive plants are plants that are not native to the ecosystem and cause harm to the environment, the economy, or human health. Many of these invasive plants have an unfair advantage over our native plants. While our native plants evolved here and are used by many animals, invasive plants often leave the insects and animals that feasted upon them behind. Invasive species management is an attempt to level this playing field and allow native plant communities to become established. Once established, they are often resilient enough to resist invasion on their own. The good news is that many plant invasions can be reversed, halted, or slowed. In certain situations, even badly infested areas can be restored to healthy systems dominated by native species. In most instances, this requires taking action to control and manage those invasive plants.

Finn Rock Landing Improvements Goals:

McKenzie River Trust will increase the accessibility and improve the functionality of the Finn Rock Reach Boat Landing. Improvements include grading and surfacing of access roads, installation of parking stalls, including needed designated truck and boat trailer parking spaces, staircase, additional boulders, wood rail fencing, ADA-accessible picnic area, lighting, and relocation of a kiosk. An added benefit of the project is to facilitate more access to the McKenzie River and promote tourism, particularly since this area burned in the Holiday Farm Fire in 2020.

Construction elements of the Finn Rock Landing Improvements project include:

- removal of existing concrete pad
- removal of one unused wooden electrical pole
- grading and surfacing of access roads
- addition of ADA parking signs
- Installation of parking stalls and concrete wheel stops
- pathway sections South of the restroom and ADA parking stalls
- wood rail fencing
- concrete stairs with handrails
- protection boulders
- Site lighting: light fixtures, poles, concrete bases, conduit, time clock, etc.

Partners/Other Funding Sources

- NOAA
- OWEB
- Pacific Lamprey Conservation Initiative
- Oregon Parks and Recreation Department – Recreational Trails Program
- Ford Family Foundation
- Lane County Video Lottery Grant
- Norman and Olga Evelyn Wildish Fund of Oregon Community Foundation
- McKenzie Masters Foundation
- Private Donations

Grant Summary

Grantee Legal Name: David's Chair Outdoor Mobility Systems

Grantee Entity Type: 501(c)(3) nonprofit

Address: 185 Eastern St. Ste. 400, White City, OR 97503

Point of Contact Name, Email, Phone: Jeff Kallevig, Operations Manager, NW Oregon.

jeffk@davidchair.org (503)320-3127

Project/Program Name: Fixed location track chair

Project/Program Location: Florence, OR

Estimated Start Date: 10/24/23

Estimated Completion Date: Ongoing

Amount of Award: \$25,000 (\$5,000 per year)

Grantee Bio/Short Description

David's Chair is a 501 C (3) nonprofit that allows people with mobility challenges to use track chairs and Para Golfers in multiple programs at no cost.

David's Chair has purchased and owns a fleet of track chairs and Para Golfers that they maintain for people to use free of charge. David's Chair also hosts events called excursions at various locations throughout the year. Excursions are designed to allow a person with mobility challenges to attend an event at a scheduled location and time and use one of our track chairs without needing to transport it.

In addition to Excursions, we also offer the Tow and Go Program and Fixed Site Location Chair Program.

Grantee Mission/Vision

Our mission is to enrich the lives of mobility impaired people with independence and freedom by empowering them to engage in outdoor activities they previously were unable to, free of charge

Project/Program Description

David's Chair OMS allows people with mobility challenges to use electric all-terrain track chairs in multiple locations and programs at no cost. David's Chair has purchased and owns a fleet of track chairs that we maintain for people to use free of charge.

Desired Outcomes/Goals

Sustainable partnership with the community of Florence OR, in order to provide our track chair for use.



Demonstration of mobility chair at Heceta Beach, Florence, Oregon.



Path to beach near Driftwood Shores & Heceta Beach County Park.

Grant Summary

Grantee Legal Name: Emerald Valley Pickleball Foundation

Grantee Entity Type: 501(c)3

Address: 2160 Rocky Ln, Eugene, OR 97401

Point of Contact Name, Email, Phone: Karen Gaffney, karengaffney@comcast.net, 541-729-5348

Project/Program Name: Regional Pickleball Complex

Project/Program Location: 4000 E. 30th Ave, Eugene, OR 97405

Estimated Start Date: 1/1/24

Estimated Completion Date: 10/31/25

Amount of Award: \$500,000

Grantee Bio/Short Description

The Emerald Valley Pickleball Foundation is a 501(c)(3) nonprofit organization established in 2021 to support the fundraising needs of the [Emerald Valley Pickleball Club](#). Based in Lane County, the Foundation raises funds to support the expansion of pickleball facilities and programs to benefit pickleball players throughout the region.

We are currently focused on raising funds for a new state-of-the-art [Regional Pickleball Complex](#) at Lane Community College (LCC). The complex will be jointly funded by public and private funds, and the Foundation is lead on raising funds for the facility. This new complex will greatly expand the opportunities for pickleball play in the region, and it will have enough courts to meet the needs for drop-in play, leagues, clinics, lessons, and tournaments.

Grantee Mission/Vision

Pickleball is inexpensive to play, its rules simple to understand, and offers benefits for the mind, body and spirit. By design it's a very social sport, helping combat loneliness and chronic illness. It's a great way to help seniors stay active and engaged—a full half of frequent players are 55 or older, and a third are 65-plus. And, young people are the fastest growing segment of players in our community. With double the number of participants in 2022 than the year before, pickleball is officially the fastest growing sport in America. Here in the Eugene-Springfield area, the accessibility of pickleball has more and more people trying out the sport every day. The local pickleball community reflects the diversity of the area, enthusiastically welcoming people from different racial and ethnic backgrounds, of all genders and a wide age range, and all skill levels and abilities.

Despite the increased demand and benefits of play, there is a significant lack of places to play in our community. Without places to play, locals may miss out on the physical, mental, and social benefits of pickleball.

Project/Program Description

This project includes the design and construction of a Regional Pickleball Complex on the LCC Campus at the corner of 30th Avenue and Eldon Schaffer Drive. We envision a completed complex with 24 courts, of which 2 will be "championship courts" and 10 will be covered. There

is a deep commitment to creating a facility that is truly welcoming and inclusive, so the design will include gates and pathways that can accommodate wider sports wheelchairs for players and spectators, clear signage, and other elements focused on accessibility.

The initial phase is planned to begin in January 2024 with geotechnical surveys and other site preparation which will inform the development of the schematic design and construction drawings. This work will run parallel in 2024 with fundraising efforts. At the end of 2024, we anticipate construction and bid documents will be completed with a groundbreaking planned for May 2025. Given the scope of this project, we anticipate construction would be complete by October 2025.

Desired Outcomes/Goals

The ultimate goal is to open a 24-court Regional Pickleball Complex on the campus of Lane Community College. Milestones along the way include completion of drawings, bid documents, and groundbreaking. This will result in increased places for Lane County residents and out-of-town guests to engage in pickleball, both through free beginner clinics, open recreation play, classes, and tournaments.

Partners/Other Funding Sources

The total project cost is currently estimated at \$5M. This project will be funded through a combination of public and private partners, and the fundraising campaign is still in process. Lane Community College has contributed land and parking for the Pickleball Complex, valued at about \$950,000. In addition to a private capital campaign fundraising drive, the Foundation has submitted requests for public funding to the City of Eugene, the State of Oregon, and Travel Oregon, and expects to pursue federal and other public dollars. The Foundation is also submitting grant requests to private foundations and local individual and corporate sponsors.

Two key partners in this effort are the Emerald Valley Pickleball Club, the entity that will manage operations of the courts once they are built, and Lane Community College which will ultimately own the facility since it will be constructed on their property. A 3-way MOU has been executed between the three entities to secure those roles and responsibilities.



Rendering of regional pickleball facility at Lane Community College.



Rendering of center courts at regional pickleball facility.

LEVY CONSERVATION PROJECTS										
Category	Group	Project	Short Description	Original TTL	Revised TTL	FY2024	FY2025	FY2026	FY2027	FY2028
Special Projects	Trail Improvements	Trail Improvements at HBRA	New trails, accessibility improvements, trail maintenance, kiosks.	500,000						
Special Projects	Trail Improvements	Trail Improvements at HBRA	Kiosks fabrication N Bottoms, Main, E parking		100,000	25,000	50,000	25,000		
Special Projects	Trail Improvements	Trail Improvements at HBRA	Seating and viewpoint development per HMP		50,000					
Special Projects	Trail Improvements	Trail Improvements at HBRA	Trail barrier removal to universal access standard		100,000					
Special Projects	Trail Improvements	Trail Improvements at HBRA	Replace stairway to heaven trail		150,000					
Special Projects	Trail Improvements	Trail Improvements at HBRA	HBRA Waterway Access							
Special Projects	Trail Improvements	Trail Improvements at HBRA	Trail maintenance		100,000					
Special Projects	Trail Improvements	Trail Improvements at HBRA	Summit area improvements to improve experience and reduce habitat impacts				25,000	25,000		
				500,000	500,000	25,000	75,000	50,000	0	0
Special Projects	Cooperative Projects	HBRA Habitat Improvement	Contract with Friends of Buford Park for habitat management.	180,000	180,000	36,000	36,000	36,000	36,000	36,000
Special Projects	Cooperative Projects	McKenzie River Trust - Finn Rock Reach	Funding support for improvements at Finn Rock Reach.	150,000	150,000	150,000	0	0	0	0
				330,000	330,000	186,000	36,000	36,000	36,000	36,000
Special Projects	Environmental Education	Mt. Pisgah Arboretum Educational Programming	Educator, bilingual walks, forums, low-income youth scholarships.	500,000	500,000	100,000	100,000	100,000	100,000	100,000
				500,000	500,000	100,000	100,000	100,000	100,000	100,000
Conservation & Education	Natural Areas Program	Habitat Stewardship		350,000						
Conservation & Education	Natural Areas Program	Invasive Species Removal-Ivy	McKenzie River		75,000		15,000	20,000	20,000	20,000
Conservation & Education	Natural Areas Program	Invasive Species Removal-Knotweed and Ivy	Siuslaw River		50,000		10,000	10,000	15,000	15,000
Conservation & Education	Natural Areas Program	Invasive Species Removal-Early Detection Rapid Response	All Parks		100,000	20,000	20,000	20,000	20,000	20,000
Conservation & Education	Natural Areas Program	Prarie & Savanna Restoration	Kinney, Vickery, Perkins		75,000		25,000			
Conservation & Education	Natural Areas Program	Dune Restoration	3 Mile Prarie, Clear Lake, South Beach, North Jetty		50,000	10,000	10,000	10,000	10,000	10,000
				350,000	350,000	30,000	80,000	60,000	65,000	65,000
Conservation & Education	Natural Areas Program	Riparian and Floodplain Restoration		270,000						
Conservation & Education	Natural Areas Program	Riparian and Floodplain-Restoration	HBRA N or S Bottomlands		170,000					
Conservation & Education	Natural Areas Program	Riparian and Floodplain-Habitat Enhancement	Armitage, Hendricks, Hileman (50K)		100,000				50,000	
				270,000	270,000	0	0	0	50,000	0
Conservation & Education	Education	Interpretive Programming	Projects and parks TBD	100,000	100,000					
				100,000	100,000	0	0	0	0	0
Conservation & Education	Education	Recreation Programming		100,000						
Conservation & Education	Education	Recreation Programming	Trails projects (Armitage Crilly Trail & Vickery)		50,000		50,000			
Conservation & Education	Education	Recreation Programming-Trail Maps	Rivers 2 Ridges		25,000		25,000			
Conservation & Education	Education	Recreation Programming	David's Chair at Heceta Beach		25,000	5,000	5,000	5,000	5,000	5,000
				100,000	100,000	5,000	80,000	5,000	5,000	5,000
Conservation & Education	Water Trails	Guidebook & Map	Guidebook & map of McKenzie River, Siuslaw (AK watershed sign?)	75,000	75,000					
				75,000	75,000	0	0	0	0	0
Conservation & Education	Water Trails	Signage	Updated signage	75,000	75,000					
				75,000	75,000	0	0	0	0	0
				2,300,000	2,300,000	346,000	371,000	251,000	256,000	206,000

CONSTRUCTION PROJECTS

Valley Projects

Project ID	Priority	Park Location	Project Type	Project Scope	Status	Timeline	Project Manager	Who to Perform Work?	Funding	Details/Next Steps					
Security Cameras & Car Counter	High	HBRA	Small Construction Projects	Security Cameras	In-progress: Construction	2024	BH			In-progress: EPUD installing new service (Valley Tel contracted. EPUD contracted. BELCO contract awaiting insurance.)					
		HBRA	Maintenance Upgrades	Car Counter											
Security Cameras		Marinas	Small Construction Projects	Security Cameras						Needs scoping: consider combining with campground internet project					
Armitage Park: Ph 1	High	Armitage	Major Capital Projects	Maintenance Shop	In-progress: Construction 2024	2024	AR	Consultant: Branch Engineering; Contractor: Classic Design & Construction		Demo old maintenance shop and construct new maintenance shop					
Armitage Park: Ph 2	Medium	Armitage	Major Capital Projects	Dog Park Shelter: both dog parks	In progress: Design	2024	RS			Installation of (x2) Dog Park Shelters: both dog parks; need survey points					
		Baker Bay	Major Capital Projects	Paving & Curbing: pothole repairs, crack/chip seal, restriping						park road and parking lot resurfacing, regrading, sealcoating, and restriping, boat ramp and turnaround					
		Harbor Vista	Major Capital Projects	Paving & Curbing: pothole repairs, crack/chip seal, restriping											
		HBRA	Major Capital Projects	Paving & Curbing: pothole repairs, crack seal, restriping, wheel stops											
		Heceta Beach	Major Capital Projects	Paving & Curbing: pothole repairs, crack/chip seal, restriping											
		Hendricks Bridge	Major Capital Projects	Paving & Curbing: pothole repairs, crack/chip seal, restriping											
		Orchard Point	Major Capital Projects	Paving & Curbing: pothole repairs, crack/chip seal, restriping											
		High	North Jetty	Major Capital Projects							Paving & Curbing: pothole repairs, crack/chip seal, restriping	2024			(2024): Repairs - pothole repairs, crack seal, restriping; note: full reconstruction planned for 2025
		Perkins Peninsula	Major Capital Projects	Paving & Curbing: pothole repairs, crack/chip seal, restriping											
		Richardson	Major Capital Projects	Paving & Curbing: pothole repairs, crack seal, restriping, wheel stops											
		Other: Bender Landing, Deerhorn Landing, Farnham Landing, West Lake, Linslaw Park, Zumwalt Park	Major Capital Projects	Paving & Curbing: pothole repairs, crack seal, restriping, wheel stops											
Lighting Projects		Armitage	Small Construction Projects	Lighting				Consultant		Lighting needs: dog park, fee station, parking lot, park entrance, campground pathways to restrooms, new shop/maintenance yard					
		Baker Bay	Small Construction Projects	Lighting				Consultant		Consider extra lighting near showerhouse/walkways, consider adding a light to the west day-use parking lot, evaluate existing lighting in field just west of playground, add light at T in access road along with signage, evaluate lighting in the campground and consider appropriate additional lighting; consider moving one of the host sites to east end of campground and adding power pedestal/lighting; (existing lighting: 1) one in open field/day use, 2) one at boat ramp/parking lot, 3) one near the shower house, 4) one next to vault toilet in campground, 5) one behind host site) 6) on access road coming into the park before the T)					
		Camp Lane	Maintenance Upgrades	Lighting: LED lighting replacement in the lodge	In-progress: Maintenance + LC Electrician				Internal + LC Electrician		Dan Anderson is working directly with the Lane County Electrician				
		HBRA	Small Construction Projects	Lighting					Consultant		Determine if it is feasible to add lighting to the security camera poles - if feasible, identify locations and access to power source, identify light fixtures, order and install (evaluate if these locations are the best locations or if we want to consider other preferable locations - i.e. where would add lighting if we are designing from scratch)				
		Hendricks Bridge	Small Construction Projects	Lighting					Consultant		Consider adding street lighting along access drive, day use and boat ramp parking lots, and pathway to restroom, picnic shelter w/ outlets, and possibly the boat ramp (existing lighting: note: power meter is located in the pump house just east of the shelter, park entrance over gate, lighting on the bathroom (maybe/confirm)				
		Orchard Point	Maintenance Upgrades	Lighting					Internal		(existing lighting: one above fee machine, exterior lighting on restrooms) consider adding a light above the boat ramp, and parking lots				
		Perkins Peninsula	Small Construction Projects	Lighting							(existing lighting: above the boat ramp, 3 street lights above marina(4 head fixture), marina bathroom, above fee machine in day use) To do: Electrician to evaluate previous pathway lighting locations and if lighting can be reinstalled. Consider #2 day use restroom and/or other day use areas				
		Richardson	Small Construction Projects	Lighting					Consultant		(Existing lighting: one at boat ramp, 3 along the boardwalk at marina entrances (4 head LED fixture), marina shelter (?), campground office, A & B loop restrooms (evaluate fixtures/possibly upgrade), camp site pedestals have power but not lighting, day-use shelter 2 & 3, day-use bathrooms - have power but unsure about lighting?) Consider: marina parking lots/campground overflow, entrance/campground/marina access road lighting; evaluate restrooms to see if lighting is sufficient				
Campground Internet		Armitage	Small Construction Projects	Campground Internet		2024-26	BC			Campground Internet: Priority 1) Camp Office; Priority 2) Camp Sites					
		Baker Bay								Scope of work: 1) existing conditions (identify existing utility locations) at each campground 2) coordinate with TS & ISP's - define which services we want 3) develop scope and RFQ/ITB					
		Harbor Vista													
		Richardson													
Campground: Camp Site Pedestals		Armitage	Maintenance Upgrades	Camp Sites/Pedestals			TB	Park Maintenance		Maintenance to do the initial assessments					
		Baker Bay	Maintenance Upgrades	Camp Sites/Pedestals				Internal		Scope of work?					
		Richardson	Maintenance Upgrades	Camp Sites/Pedestals				Internal							

HBRA Trails		HBRA	Small Construction Projects	Arboretum: ADA Waterway Access & ADA Parking	In-progress	2024-25	EA	Mt. Pisgah Arboretum + Cameron McCarthy Consultants		Non-Motorized, Wetland/waters delineation completed, Contract amendment completed (Marine Board?)
		HBRA	Small Construction Projects	North Bottomlands: Universal Access Trails	In-progress	2024-25	EA	Friends of Mt. Pisgah		Grant Funded: 3 Trails including a Universal Access Trail Loop (1 of 3 to be completed in 2024)
HBRA: Signage and Gateway		HBRA	Site Planning	Park Entrance Gateway			RS/EA			Park Entrance: 1) Update signage and wayfinding at the park entrance: explore creating a gateway welcoming visitors into the park; Roadways and Visitor Areas: 1) get survey for park entrance area; 2) design a park entrance with wayfinding that has strong branding for LC and partner organizations; 3) solicit quotes from a contractor
HBRA North Bottomlands		HBRA	Small Construction Projects	North Bottomlands: Kiosk	In-progress	2024		Consultant: Sea Reach Ltd.		Kiosk at the North Bottomlands Trailhead (installation 2024?)
		HBRA	Site Planning	North Bottomlands: Vault Restrooms				Internal	\$200,000	New Restrooms (Vault Toilets) - Site planning: (next steps) 1) solicit input on locations from partners; 2) develop a conceptual site plan with alternatives and/or preferred location(s); 3) finalize location and costs estimate; 4) permitting and procurement; 5) installation
Campground Offices	Low	Baker Bay	Small Construction Projects	Campground Office: Pre-fab structure		2024		Bjorn/Todd - direct procurement		Similar model to Armitage campground office, need to solicit quotes and procure
		Harbor Vista	Small Construction Projects	Campground Office: replace		2024		Bjorn/Todd - direct procurement		Consider pre-fab office, similar model to Armitage campground office, need to solicit quotes and procure
Restrooms: Vault Toilets		McKenzie River Corridor	Major Capital Projects	Restroom: Vault Toilet replacement						1) Need an inventory and assessment. 2) Scope: repair or replace all wayside vault toilets

Coast Projects

Project ID	Priority	Park Location	Project Type	Project Scope	Status	Timeline	Project Manager	Who to Perform Work?	Funding	Details/Next Steps
North Jetty: Parking Lot Reconstruction	High	North Jetty	Major Capital Projects	Parking Lot Reconstruction	Project Scoping	2024-25		Dan/Consultant	\$600,000	Parking lot reconstruction with new vault toilet: (Next Steps): 1) Develop consultant scope 2) solicit RFP for consultants - survey/design/engineering/EE/permitting/bidding/CA) 3) construction 2025; note: temporary repairs planned for 2024
	High	North Jetty	Major Capital Projects	Add Vault Toilet		2024-25		Dan/Consultant		
		North Jetty	Small Construction Projects	Lighting						
Harbor Vista: Restrooms and Utility Upgrades	High	Harbor Vista	Major Capital Projects	Restrooms/Shower Building: remodel	In-progress: design and engineering			Dan/Ashleigh/Consultant (TBD)		Status: have a scope of work, need to hire a consultant to do design
		Harbor Vista	Major Capital Projects	Utilities: lighting, camp site pedestals, sewer						Lighting: Add site/pedestrian lighting, camp site pedestals/full hook-up (define "full hook-up"?); Sewer: connect remaining sites to city sewer
Haceta Beach: Restrooms, Security, and Lighting		Heceta Beach	Major Capital Projects	Restrooms	In progress: Application submittal			Dan/Consultant?		Status: Annexation paperwork submitted, responding to request for more info. Need to submit payment to City of Florence (\$1700) Scope of Work: Remove vault toilets, Restrooms (2 Unit unisex flush toilets), Annexation timeline?) Proceed with design after an
		Heceta Beach	Major Capital Projects	Security	In progress: Application submittal			Dan/Consultant?		Security Cameras, Security Services
		Heceta Beach	Small Construction Projects	Lighting				Internal + LC Electrician		Define scope of work... additional parking lot lighting? Lighting above vault toilet? Lighting along the trail to the beach? (existing lighting: 1) lighting above fee machine)
Camp Lane Projects		Camp Lane	Major Capital Projects	Basketball Structure	In-progress: structural damage assessment			Consultant		Structural damage from tree during ice storm - need engineers assessment on basketball shelter
		Camp Lane	Major Capital Projects	Bunkhouse: reconstruction				Consultant		floodway/floodplain issues... need survey, site plan, LMD review
		Camp Lane	Small Construction Projects	Paving & Curbing: pedestrian walkways						Need survey, Site Plan, Procurement. Request to survey team has been submitted
		Camp Lane	Small Construction Projects	Utilities: electric panels, water valves						Need scope of work. Bids
		Camp Lane	Major Capital Projects	Restrooms: remodel + add ADA showers				Ashleigh + Consultant		need proposal - get a design engineer under contract
		Camp Lane	Small Construction Projects	Lodge: Re-roof	In-progress			Consultant		Awaiting insurance for contracting
		Camp Lane	Small Construction Projects	Lodge: Fireplace wood stove insert	In-progress			Consultant		Soliciting quotes
	Camp Lane	Maintenance Upgrades	Caretaker House	Complete			Internal		Drywall	

SITE PLANNING AND DESIGN

Project ID	Priority	Park Location	Project Type	Project Scope	Status	Timeline	Project Manager	Who to Perform Work?	Funding	Details/Next Steps
		Harbor Vista	Site Planning	Campground Expansion: Tent Sites and Cabins				Internal		Site planning to consider the possibility/feasibility of adding new tent sites and additional cabins
		North Jetty	Site Planning	Elevated Boardwalk						Design an elevated boardwalk from the parking lot to the beach
ADA Plan	High	All Parks	Planning	ADA Assessment and Transition Plan		2024	BH			Get completed Facility ADA Assessment checklists from Molly Rogers/Kristen Lee (Linn County has a plan for reference/precedent)
	High	Perkins Peninsula	Major Capital Projects	Utilities: Water, Sewer and Restrooms			TB			Water system needs full assessment (Next Steps: Todd to hire a company to assess the system for
		Orchard Point	Site Planning	Dog Park Feasibility Study						Site selection study: evaluate site suitability for a potential dog park
		Zumwalt	Site Planning	Park Entrance and Access						Evaluate park access and potential parking area for Zumwalt at Vista Dr
		Armitage	Site Planning	Park Entrance and Signage				Rebecca/Park Maintenance		Landscaping and beautification
		Orchard Point	Site Planning	Park Entrance				Rebecca/Park Maintenance		Remove "fee station" and if possible replace with landscape bed- evaluate options in field with Rebecca and Ed L.

Park Entrance Improvements and Signage		Perkins Peninsula	Site Planning	Park Entrance	Complete			Rebecca/Park Maintenance		Entrance Sign - replaced Regrade Gravel Area - status?
		Richardson	Site Planning	Park Entrance				Rebecca/Park Maintenance		Remove Booth Relocate Fee Machine Wayfinding Signage Landscaping
		Baker Bay	Site Planning	Park Signage				Rebecca/Park Maintenance		Site Planning/Inventory/Sign Plan: Update signage on kiosks, fee stations, park entrance, internal road wayfinding, park maps, etc.
		Heceta Beach	Site Planning	Park Entrance and Signage				Rebecca/Park Maintenance		Park Entrance signage and landscaping; Trails wayfinding & signs
		Hendricks Bridge	Site Planning	Park Entrance and Signage				Rebecca/Park Maintenance		upgrade park signage
		Armitage	Site Planning	Signage				Rebecca/Park Maintenance		
		Zumwalt	Site Planning	Signage				Rebecca/Park Maintenance		Wayfinding Signage
		Hendricks Bridge	Maintenance Upgrades	Bioswale Maintenance				Rebecca/Park Maintenance		Replace dead vegetation with appropriate native vegetation
		Armitage	Site Planning	All-Inclusive Playground				Internal		Possible high-profile project, build upon and refine the existing consultant conceptual design to right-size the project to budget

MAINTENANCE UPGRADES

Project ID	Priority	Park Location	Project Type	Project Scope	Status	Timeline	Project Manager	Who to Perform Work?	Funding	Details/Next Steps
		Armitage	Maintenance Upgrades	Restrooms				Park Maintenance		Campground and Day use restroom improvements (new roof, siding, fixtures)
		Armitage	Maintenance Upgrades	Visitor Amenities				Park Maintenance		Refurbish picnic tables (replace boards & bases as needed)
		Baker Bay	Maintenance Upgrades	Visitor Amenities				Park Maintenance		Refurbish picnic tables (replace boards & bases as needed)
		Harbor Vista	Maintenance Upgrades	Visitor Amenities				Park Maintenance		Refurbish picnic tables (replace boards & bases as needed)
		Hendricks Bridge	Maintenance Upgrades	Visitor Amenities				Park Maintenance		Refurbish picnic tables (replace boards & bases as needed)
		Orchard Point	Maintenance Upgrades	Visitor Amenities				Park Maintenance		Replace Grills, Refurbish picnic tables, upgrade Horse Shoe Pits; other?
		Perkins Peninsula	Maintenance Upgrades	Visitor Amenities				Park Maintenance		Remove water fountains, refurbish picnic tables, other?
		Richardson	Maintenance Upgrades	Visitor Amenities				Park Maintenance		Refurbish picnic tables (replace boards & bases as needed)
		Richardson	Maintenance Upgrades	Memorial Bench				Park Maintenance		Order Bench Survey for Install
		Zumwalt	Maintenance Upgrades	Visitor Amenities				Park Maintenance		Refurbish picnic tables (replace boards & bases as needed)
		All Parks	Maintenance Upgrades	FFE				Park Maintenance		Basketball courts – rims, nets Bicycle racks Defibrillators Fire rings First aid kits Fuel storage cabinets Horseshoe pits Life jacket kiosks Life ring stations Phone charging stations Picnic Tables (frames & lumber) Swim bay buoys, floats, markers Trash receptacles Volleyball courts – nets, sand
		Baker Bay	Maintenance Upgrades	Dock: Resurfacing and Repairs				Park Maintenance		Replace wood planks on courtesy dock and boat marina; general repairs
		Baker Bay	Maintenance Upgrades	Boat Ramp				Park Maintenance		Improve/repave boat ramp to enhance access to Dorena Lake
		Baker Bay	Maintenance Upgrades	Marina Slips: Numbering				Park Maintenance		paint numbers on marina slips for identification
		Orchard Point	Small Construction Projects	Marina Dock	Planning			Park Maintenance		E Dock: Study to determine path forward. Remove Fingers? Best to perform when there is water. Remove fingers instead of demo in place?
		Orchard Point	Maintenance Upgrades	Docks: Resurfacing and Repairs				Park Maintenance		Replace wood planks on courtesy dock and boat marina; general repairs
		Orchard Point	Small Construction Projects	Marina Boat Ramp				Park Maintenance		Toe too short for high draft boats
		Perkins Peninsula	Small Construction Projects	Boat Ramp				Park Maintenance		Add non-motorized boat ramp
		Richardson	Maintenance Upgrades	Docks: Resurfacing and Repairs	Complete			Park Maintenance		Replace wood planks on courtesy dock and boat marina; general repairs
		Perkins Peninsula	Maintenance Upgrades	Swimming Area				Park Maintenance		Remove the swim bay wood wall
		Armitage	Maintenance Upgrades	Tree Assessment	Complete			Sperry Tree Contractors		Level 1 Tree Assessment complete. Next Steps: 1) sort assessment data and identify highest risk - location/consequence of failure/likelihood of failure/likelihood of Impacting target. 2) develop a scope of work to address the highest risk trees. 3) solicit quotes 4) NTP
		Hendricks Bridge	Maintenance Upgrades	Tree Assessment	Complete			Sperry Tree Contractors		Level 1 Tree Assessment complete. Next Steps: 1) sort assessment data and identify highest risk - location/consequence of failure/likelihood of failure/likelihood of Impacting target. 2) develop a scope of work to address the highest risk trees. 3) solicit quotes 4) NTP
		HBRA/Mt. Pisgah Arboretum	Maintenance Upgrades	Tree Assessment	Complete			Sperry Tree Contractors		Level 1 Tree Assessment complete (for Arboretum only). Next Steps: 1) sort assessment data and identify highest risk - location/consequence of failure/likelihood of failure/likelihood of Impacting target. 2) develop a scope of work to address the highest risk trees. 3) solicit quotes 4) NTP
		Baker Bay	Maintenance Upgrades	Tree Assessment						Contractor to perform Level 1 Tree Assessment
		Richardson	Maintenance Upgrades	Tree Assessment						Campground: Contractor to perform Level 1 Tree Assessment
		HBRA	Maintenance Upgrades	Park Entrance Gates				Park Maintenance/ROW		Evaluate and install gates at the main and east entrances
		Orchard Point	Maintenance Upgrades	Demo: Fuel House				Park Maintenance		Remove Fuel House. Permits needed
		Zumwalt	Maintenance Upgrades	Demo: Well House Shed				Park Maintenance		Remove Well House Shed
		Hendricks Bridge	Small Construction Projects	Trail Improvement				Internal/Volunteers/Youth Corps		define scope of work - surfacing, level of development/improvements
		HBRA	Maintenance Upgrades	Remove Tires				Internal		

WATER ACCESS PROJECTS

Project ID	Priority	Park Location	Project Type	Project Scope	Status	Timeline	Project Manager	Who to Perform Work?	Funding	Details/Next Steps
(Levy) Waterway Access General Funding		All Parks/Waterways	Water Access Improvements						\$1,780,000	Levy: Waterway Access general funding, unspecified/undesignated to specific park or project
(Levy) Special Projects: Water Access Improvements		Ada	Water Access Improvements						\$25,000	(Levy) Special Projects: Water Access Improvements: the levy identifies funding for individual parks/waterway access locations. However the scope for each project and location has not yet been identified and will need to be determined.
		Baker Bay	Water Access Improvements						\$100,000	
		Eagle Rock Park	Water Access Improvements						\$25,000	
		Forest Glen Landing	Water Access Improvements						\$100,000	
		Hayden Bridge Landing	Water Access Improvements						\$125,000	
		Hileman Landing	Water Access Improvements						\$100,000	
		HBRA	Water Access Improvements						\$25,000	
		Mapleton Landing	Water Access Improvements						\$125,000	
		Perkins Peninsula	Water Access Improvements						\$25,000	
		Rodakowski Landing	Water Access Improvements						\$100,000	
	Whitely Landing	Water Access Improvements						\$100,000		

CONSERVATION, EDUCATION, AND NATURAL AREAS

Project ID	Priority	Park Location	Project Type	Project Scope	Status	Timeline	Project Manager	Who to Perform Work?	Funding	Details/Next Steps
		Zumwalt	Natural Areas Program	Shoreline Protection				Internal/Consultant		Long term project
(Levy) Special Projects: Trails at Buford/Pisgah (new trails, accessibility improvements, trail maintenance, kiosks)		HBRA	Special Projects	Trail Improvements		2024-26			\$100,000	Kiosks fabrication N Bottoms, Main, E parking (Sea Reach - get quote for kiosk and sign fabrication and installation for 3 kiosks)
		HBRA	Special Projects	Trail Improvements					\$50,000	Seating and viewpoint development per HMP
		HBRA	Special Projects	Trail Improvements					\$100,000	Trail barrier removal to universal access standard
		HBRA	Special Projects	Trail Improvements					\$150,000	Replace stairway to heaven trail
		HBRA	Special Projects	Trail Improvements					\$100,000	Trail maintenance
		HBRA	Special Projects	Trail Improvements						Waterway Access (from Arboretum parking lot); also identified in "construction project"
(Levy) Special Projects: Cooperative Project Habitat		HBRA	Cooperative Projects	HBRA Habitat Improvement		2024-28		Friends of Buford Park (partner)	\$180,000	Grant - Contract with Friends of Buford Park for habitat management.
		Finn Rock	Cooperative Projects	McKenzie River Trust - Finn Rock Reach		2024		McKenzie River Trust (partner)	\$150,000	Grant - Funding support for improvements at Finn Rock Reach.
(Levy) Special Projects: Environmental Education		Mt. Pisgah Arboretum Educational Programming	Environmental Education	Environmental Education		2024-28		Mt. Pisgah Arboretum (partner)	\$500,000	Educator, bilingual walks, forums, low-income youth scholarships.
Habitat Stewardship		McKenzie River	Natural Areas Program	Invasive Species Removal-Ivy		2025-28				Contract/Seek Partner funding - Walama Restoration? (contractor)
		Siuslaw River	Natural Areas Program	Invasive Species Removal-Knotweed and Ivy		2025-29				Contract/Seek Partner funding - Siuslaw Watershed Council?
		All Parks	Natural Areas Program	Invasive Species Removal-Early Detection Rapid Response		2024-28				Contract/Seek Partner funding - Kennedy School - yellow archangel at Blue Mtn, Siuslaw Falls
		Kinney, Vickery, Perkins	Natural Areas Program	Prarie & Savanna Restoration		2025				Contract/Seek Partner funding - Long Tom Watershed Council
Riparian and Floodplain Restoration		3 Mile Prarie, Clear Lake, South Beach, North Jetty	Natural Areas Program	Dune Restoration		2024-28				
		HBRA N or S Bottomlands	Natural Areas Program	Riparian and Floodplain-Restoration				Friends of Buford Park (partner)	\$170,000	HBRA N or S Bottomlands
		Armitage, Hendricks, Hileman	Natural Areas Program	Riparian and Floodplain-Habitat Enhancement		2027		partner with Watershed Councils	\$100,000	Armitage, Hendricks, Hileman
			Education	Interpretive Programming	Did this get funded?				\$100,000	Projects and park locations - TBD
Recreation Programming			Recreation Programming	Trails projects TBD		2025			\$50,000	Trails projects - TBD
			Recreation Programming	Rivers 2 Ridges		2024-28			\$25,000	Dues, trail maps, interactive map, other parnter costs/projects
		Heceta Beach	Recreation Programming	David's Chair at Heceta Beach		2024-28			\$25,000	Grant Support - David's Chair
Water Trails		McKenzie & Siuslaw Rivers	Water Trails	Guidbook and Map	Did this get funded?			Siuslaw Watershed Council (partner)	\$75,000	Guidebook & map of McKenzie River, Siuslaw (AK watershed sign?)
			Water Trails	Signage	Did this get funded?				\$75,000	Update Signage

HBRA/Mt. Pisgah (Re)Opening & Event Meeting (3-7-24)

Current Status/Work Remaining:

- Most trails still have some debris on trails
- Work parties scheduled Friday, maybe next week
- Some logs still on trail
- Trail 4 has crater in middle of trail (from root wad)
- NW Youth Corps to help with some trail debris removal
- BPA currently putting lots of effort into trail rehab this week and this weekend
- Create signs to put at Trailheads, that advise the public that trails are open but not fully cleaned up and may pose challenging conditions ahead
 - Jason to create map of trails and trailheads
 - Jodi/Steve to create signs
- Check with Bjorn as to when security services are work until?
- Follow up with BPA regarding messaging

Park Opening: Brad will remove the barriers at the entrances Thursday evening.

(Re)opening Event: Saturday March 16th, (10AM-1PM)

1. Main Event Location: Mt. Pisgah Arboretum White Oak Pavilion
2. Arboretum
 - a. Slideshow with pics of storm damage and work
 - b. Guided walks by staff
 - c. Refreshments
3. Friends of Mt. Pisgah
 - a. Staff greeting visitors at the trailheads (east and north lots)
 - b. Volunteer work party – folks can join
4. Media & Outreach:
 - a. Jodi to coordinate with Devon (another press release)
 - b. Brett to invite County Commissioners, PAC, Dan Hurley
 - c. Agenda:
 - i. 10AM: Event Begins
 - ii. 11AM: Partners Presentation and Media
 - iii. 1PM: Event Finishes
5. To Do:
 - a. Send Jodi and August interesting statistics and photos (before/after pics would be great)
 - i. August will assemble the slideshow
 - b. LC Parks to change the reader board with “welcome” message
 - c. Trailhead/intersection signs
 - i. Jason to identify locations and send to Jodi/Steve (Monday)
 - ii. Jodi/Steve to draft language and print signs to post (11x17 laminated signs) (Tuesday/Wednesday)
 - iii. Deliver signs to Jason (Wednesday)
 - iv. Jason and staff to post in the field (Wednesday/Thursday)

Requested by SENATE COMMITTEE ON JUDICIARY

**PROPOSED AMENDMENTS TO
SENATE BILL 1576**

1 In line 2 of the printed bill, after “matters” insert “; creating new pro-
2 visions; amending ORS 105.668, 105.672 and 105.688; and declaring an emer-
3 gency”.

4 Delete lines 4 through 8 and insert:

5 **“SECTION 1.** ORS 105.668 is amended to read:

6 “105.668. (1) As used in this section:

7 **“(a) ‘Local government’ has the meaning given that term in ORS**
8 **174.116.**

9 “[*a*] **(b)** ‘Structures’ means improvements in a trail, including, but not
10 limited to, stairs and bridges, that are accessible by a user on foot, on a
11 horse or on a bicycle or other nonmotorized vehicle or conveyance.

12 “[*b*] **(c)** ‘Unimproved right of way’ means a platted or dedicated public
13 right of way over which a street, road or highway has not been constructed
14 to the standards and specifications of the [*city*] **local government** with ju-
15 risdiction over the public right of way and for which the [*city*] **local gov-**
16 **ernment** has not expressly accepted responsibility for maintenance.

17 **“(2) In a city with a population of 500,000 or greater,** a personal injury
18 or property damage resulting from use of a trail that is in a public easement
19 or in an unimproved right of way, or from use of structures in the public
20 easement or unimproved right of way, by a user on foot, on a horse or on a
21 bicycle or other nonmotorized vehicle or conveyance does not give rise to a

1 private claim or right of action based on negligence against:

2 “[*a*] *A city with a population of 500,000 or more;*]

3 “**(a) The city;**

4 “(b) The officers, employees or agents of [*a city with a population of*
5 *500,000 or more*] **the city** to the extent the officers, employees or agents are
6 entitled to defense and indemnification under ORS 30.285;

7 “(c) The owner of land abutting the public easement[,] or unimproved
8 right of way[, *in a city with a population of 500,000 or more*] **in the city;** or

9 “(d) A nonprofit corporation and its volunteers for the construction and
10 maintenance of the trail or the structures in a public easement or unim-
11 proved right of way in [*a city with a population of 500,000 or more*] **the**
12 **city.**

13 “(3) [*Notwithstanding the limit in subsection (2) of this section to a city*
14 *with a population of 500,000 or more, by adoption of an ordinance or resol-*
15 *ution, a city or county*] **A local government** to which subsection (2) of this
16 section does not apply may opt to limit liability in the manner established
17 by subsection (2) of this section **by ordinance, resolution, rule, order or**
18 **other regulation** for:

19 “[*a*] *The city or county that opts in by ordinance or resolution;*]

20 “**(a) The local government;**

21 “(b) The officers, employees or agents of the [*city or county that opts in*]
22 **local government** to the extent the officers, employees or agents are enti-
23 tled to defense and indemnification under ORS 30.285;

24 “(c) The owner of land abutting the public easement[,] or unimproved
25 right of way[, *in the city or county that opts in by ordinance or resolution;*
26 *and*] **in the local government; or**

27 “(d) A nonprofit corporation and its volunteers for the construction and
28 maintenance of the trail or the structures in a public easement or unim-
29 proved right of way in the [*city or county that opts in*] **local government.**

30 “(4) [*The immunity granted by this section from a private claim or right*

1 *of action based on negligence*] **This section** does not grant immunity from
2 liability:

3 “(a) Except as provided in subsection (2)(b) or (3)(b) of this section, to a
4 person that receives compensation for providing assistance, services or ad-
5 vice in relation to conduct that leads to a personal injury or property dam-
6 age.

7 “(b) For [*personal injury or property damage resulting from*] gross
8 negligence or [*from*] reckless, wanton or intentional misconduct.

9 “(c) For an activity for which [*a person*] **the actor** is strictly liable
10 without regard to fault.

11 **“SECTION 2.** ORS 105.672 is amended to read:

12 “105.672. As used in ORS 105.672 to 105.696:

13 “(1) ‘Charge’:

14 “(a) Means the admission price or fee requested or expected by an owner
15 in return for granting permission for a person to enter or go upon the
16 owner’s land.

17 “(b) Does not mean any amount received from a public body in return for
18 granting permission for the public to enter or go upon the owner’s land.

19 “(c) Does not include the fee for a winter recreation parking permit or
20 any other parking fee of \$15 or less per day.

21 “(2) ‘Harvest’ has that meaning given in ORS 164.813.

22 “(3) ‘Land’ includes all real property, whether publicly or privately
23 owned.

24 “(4) ‘Owner’ means:

25 “(a) The possessor of any interest in any land, including but not limited
26 to the holder of any legal or equitable title, a tenant, a lessee, an occupant,
27 the holder of an easement, the holder of a right of way or a person in pos-
28 session of the land;

29 “(b) An officer, employee, volunteer or agent of a person described in
30 paragraph (a) of this subsection, while acting within the scope of assigned

1 duties; and

2 “(c) A director, partner, general partner, shareholder, limited liability
3 company member, limited liability partner or limited partner of a person
4 described in paragraph (a) of this subsection.

5 “(5) ‘Recreational purposes’ includes, but is not limited to, outdoor ac-
6 tivities such as hunting, fishing, swimming, boating, camping, picnicking,
7 hiking, **walking, running, bicycling**, nature study, outdoor educational
8 activities, waterskiing, winter sports, viewing or enjoying historical,
9 archaeological, scenic or scientific sites or volunteering for any public pur-
10 pose project.

11 “(6) ‘Special forest products’ has that meaning given in ORS 164.813.

12 “(7) ‘Woodcutting’ means the cutting or removal of wood from land by an
13 individual who has obtained permission from the owner of the land to cut
14 or remove wood.

15 **“SECTION 3.** ORS 105.688 is amended to read:

16 “105.688. (1) Except as specifically provided in ORS 105.672 to 105.696, the
17 immunities provided by ORS 105.682 apply to:

18 “(a) All land, including but not limited to land adjacent or contiguous to
19 any bodies of water, watercourses or the ocean shore as defined by ORS
20 390.605;

21 “(b) All roads, bodies of water, watercourses, rights of way, buildings,
22 fixtures and structures on the land described in paragraph (a) of this sub-
23 section;

24 “(c) All paths, trails, roads, watercourses and other rights of way, while
25 being used by a person to reach land for recreational purposes, gardening,
26 woodcutting or the harvest of special forest products, that are on land ad-
27 jacent to the land that the person intends to use for recreational purposes,
28 gardening, woodcutting or the harvest of special forest products, [*and that*
29 *have*] **provided that:**

30 **“(A) The right of way has** not been improved, designed or maintained

1 for the specific purpose of providing access for recreational purposes, gar-
2 dening, woodcutting or the harvest of special forest products; [and] or

3 **“(B)(i) The right of way has been improved, designed or maintained**
4 **to provide access for recreational purposes, gardening, woodcutting**
5 **or the harvest of special forest products;**

6 **“(ii) The right of way is not a highway maintained under ORS**
7 **810.010; and**

8 **“(iii) The improvement, design or maintenance was completed in a**
9 **manner that does not constitute:**

10 **“(I) Gross negligence or reckless, wanton or intentional miscon-**
11 **duct; or**

12 **“(II) An activity for which the actor is strictly liable without regard**
13 **to fault; and**

14 **“(d) All machinery or equipment on the land described in paragraph (a)**
15 **of this subsection.**

16 **“(2) The immunities provided by ORS 105.682 apply to land if the owner**
17 **transfers an easement to a public body to use the land.**

18 **“(3) Except as provided in subsections (4) to (7) of this section, the im-**
19 **munities provided by ORS 105.682 do not apply if the owner makes any**
20 **charge for permission to use the land for recreational purposes, gardening,**
21 **woodcutting or the harvest of special forest products.**

22 **“(4) If the owner charges for permission to use the owner’s land for one**
23 **or more specific recreational purposes and the owner provides notice in the**
24 **manner provided by subsection (8) of this section, the immunities provided**
25 **by ORS 105.682 apply to any use of the land other than the activities for**
26 **which the charge is imposed. If the owner charges for permission to use a**
27 **specified part of the owner’s land for recreational purposes and the owner**
28 **provides notice in the manner provided by subsection (8) of this section, the**
29 **immunities provided by ORS 105.682 apply to the remainder of the owner’s**
30 **land.**

1 “(5) The immunities provided by ORS 105.682 for gardening do not apply
2 if the owner charges more than \$25 per year for the use of the land for
3 gardening. If the owner charges more than \$25 per year for the use of the
4 land for gardening, the immunities provided by ORS 105.682 apply to any use
5 of the land other than gardening. If the owner charges more than \$25 per
6 year for permission to use a specific part of the owner’s land for gardening
7 and the owner provides notice in the manner provided by subsection (8) of
8 this section, the immunities provided by ORS 105.682 apply to the remainder
9 of the owner’s land.

10 “(6) The immunities provided by ORS 105.682 for woodcutting do not apply
11 if the owner charges more than \$75 per cord for permission to use the land
12 for woodcutting. If the owner charges more than \$75 per cord for the use of
13 the land for woodcutting, the immunities provided by ORS 105.682 apply to
14 any use of the land other than woodcutting. If the owner charges more than
15 \$75 per cord for permission to use a specific part of the owner’s land for
16 woodcutting and the owner provides notice in the manner provided by sub-
17 section (8) of this section, the immunities provided by ORS 105.682 apply to
18 the remainder of the owner’s land.

19 “(7) The immunities provided by ORS 105.682 for the harvest of special
20 forest products do not apply if the owner makes any charge for permission
21 to use the land for the harvest of special forest products. If the owner
22 charges for permission to use the owner’s land for the harvest of special
23 forest products, the immunities provided by ORS 105.682 apply to any use of
24 the land other than the harvest of special forest products. If the owner
25 charges for permission to use a specific part of the owner’s land for har-
26 vesting special forest products and the owner provides notice in the manner
27 provided by subsection (8) of this section, the immunities provided by ORS
28 105.682 apply to the remainder of the owner’s land.

29 “(8) Notices under subsections (4) to (7) of this section may be given by
30 posting, as part of a receipt, or by such other means as may be reasonably

1 calculated to apprise a person of:

2 “(a) The limited uses of the land for which the charge is made, and the
3 immunities provided under ORS 105.682 for other uses of the land; or

4 “(b) The portion of the land the use of which is subject to the charge, and
5 the immunities provided under ORS 105.682 for the remainder of the land.

6 “**SECTION 4.** ORS 105.668, as amended by section 1 of this 2024 Act, is
7 amended to read:

8 “105.668. (1) As used in this section:

9 “(a) ‘Local government’ [*has the meaning given that term in ORS*
10 *174.116*] **means a city or county.**

11 “(b) ‘Structures’ means improvements in a trail, including, but not limited
12 to, stairs and bridges, that are accessible by a user on foot, on a horse or
13 on a bicycle or other nonmotorized vehicle or conveyance.

14 “(c) ‘Unimproved right of way’ means a platted or dedicated public right
15 of way over which a street, road or highway has not been constructed to the
16 standards and specifications of the local government with jurisdiction over
17 the public right of way and for which the local government has not expressly
18 accepted responsibility for maintenance.

19 “(2) In a city with a population of 500,000 or greater, a personal injury
20 or property damage resulting from use of a trail that is in a public easement
21 or in an unimproved right of way, or from use of structures in the public
22 easement or unimproved right of way, by a user on foot, on a horse or on a
23 bicycle or other nonmotorized vehicle or conveyance does not give rise to a
24 private claim or right of action based on negligence against:

25 “(a) The city;

26 “(b) The officers, employees or agents of the city to the extent the offi-
27 cers, employees or agents are entitled to defense and indemnification under
28 ORS 30.285;

29 “(c) The owner of land abutting the public easement or unimproved right
30 of way in the city; or

1 “(d) A nonprofit corporation and its volunteers for the construction and
2 maintenance of the trail or the structures in a public easement or unim-
3 proved right of way in the city.

4 “(3) A local government to which subsection (2) of this section does not
5 apply may opt to limit liability in the manner established by subsection (2)
6 of this section by ordinance, resolution, rule, order or other regulation for:

7 “(a) The local government;

8 “(b) The officers, employees or agents of the local government to the ex-
9 tent the officers, employees or agents are entitled to defense and
10 indemnification under ORS 30.285;

11 “(c) The owner of land abutting the public easement or unimproved right
12 of way in the local government; or

13 “(d) A nonprofit corporation and its volunteers for the construction and
14 maintenance of the trail or the structures in a public easement or unim-
15 proved right of way in the local government.

16 “(4) This section does not grant immunity from liability:

17 “(a) Except as provided in subsection (2)(b) or (3)(b) of this section, to a
18 person that receives compensation for providing assistance, services or ad-
19 vice in relation to conduct that leads to a personal injury or property dam-
20 age.

21 “(b) For gross negligence or reckless, wanton or intentional misconduct.

22 “(c) For an activity for which a person is strictly liable without regard
23 to fault.

24 “**SECTION 5.** ORS 105.672, as amended by section 2 of this 2024 Act, is
25 amended to read:

26 “105.672. As used in ORS 105.672 to 105.696:

27 “(1) ‘Charge’:

28 “(a) Means the admission price or fee requested or expected by an owner
29 in return for granting permission for a person to enter or go upon the
30 owner’s land.

1 “(b) Does not mean any amount received from a public body in return for
2 granting permission for the public to enter or go upon the owner’s land.

3 “(c) Does not include the fee for a winter recreation parking permit or
4 any other parking fee of \$15 or less per day.

5 “(2) ‘Harvest’ has that meaning given in ORS 164.813.

6 “(3) ‘Land’ includes all real property, whether publicly or privately
7 owned.

8 “(4) ‘Owner’ means:

9 “(a) The possessor of any interest in any land, including but not limited
10 to the holder of any legal or equitable title, a tenant, a lessee, an occupant,
11 the holder of an easement, the holder of a right of way or a person in pos-
12 session of the land;

13 “(b) An officer, employee, volunteer or agent of a person described in
14 paragraph (a) of this subsection, while acting within the scope of assigned
15 duties; and

16 “(c) A director, partner, general partner, shareholder, limited liability
17 company member, limited liability partner or limited partner of a person
18 described in paragraph (a) of this subsection.

19 “(5) ‘Recreational purposes’ includes, but is not limited to, outdoor ac-
20 tivities such as hunting, fishing, swimming, boating, camping, picnicking,
21 hiking, [*walking, running, bicycling,*] nature study, outdoor educational ac-
22 tivities, waterskiing, winter sports, viewing or enjoying historical,
23 archaeological, scenic or scientific sites or volunteering for any public pur-
24 pose project.

25 “(6) ‘Special forest products’ has that meaning given in ORS 164.813.

26 “(7) ‘Woodcutting’ means the cutting or removal of wood from land by an
27 individual who has obtained permission from the owner of the land to cut
28 or remove wood.

29 **“SECTION 6.** ORS 105.688, as amended by section 3 of this 2024 Act, is
30 amended to read:

1 “105.688. (1) Except as specifically provided in ORS 105.672 to 105.696, the
2 immunities provided by ORS 105.682 apply to:

3 “(a) All land, including but not limited to land adjacent or contiguous to
4 any bodies of water, watercourses or the ocean shore as defined by ORS
5 390.605;

6 “(b) All roads, bodies of water, watercourses, rights of way, buildings,
7 fixtures and structures on the land described in paragraph (a) of this sub-
8 section;

9 “(c) All paths, trails, roads, watercourses and other rights of way, while
10 being used by a person to reach land for recreational purposes, gardening,
11 woodcutting or the harvest of special forest products, that are on land ad-
12 jacent to the land that the person intends to use for recreational purposes,
13 gardening, woodcutting or the harvest of special forest products, provided
14 that[:]

15 “[A] the right of way has not been improved, designed or maintained for
16 the specific purpose of providing access for recreational purposes, gardening,
17 woodcutting or the harvest of special forest products; [or] **and**

18 “[B](i) *The right of way has been improved, designed or maintained to*
19 *provide access for recreational purposes, gardening, woodcutting or the harvest*
20 *of special forest products;]*

21 “[ii] *The right of way is not a highway maintained under ORS 810.010;*
22 *and]*

23 “[iii] *The improvement, design or maintenance was completed in a manner*
24 *that does not constitute:]*

25 “[I] *Gross negligence or reckless, wanton or intentional misconduct; or]*

26 “[II] *An activity for which the actor is strictly liable without regard to*
27 *fault; and]*

28 “(d) All machinery or equipment on the land described in paragraph (a)
29 of this subsection.

30 “(2) The immunities provided by ORS 105.682 apply to land if the owner

1 transfers an easement to a public body to use the land.

2 “(3) Except as provided in subsections (4) to (7) of this section, the im-
3 munities provided by ORS 105.682 do not apply if the owner makes any
4 charge for permission to use the land for recreational purposes, gardening,
5 woodcutting or the harvest of special forest products.

6 “(4) If the owner charges for permission to use the owner’s land for one
7 or more specific recreational purposes and the owner provides notice in the
8 manner provided by subsection (8) of this section, the immunities provided
9 by ORS 105.682 apply to any use of the land other than the activities for
10 which the charge is imposed. If the owner charges for permission to use a
11 specified part of the owner’s land for recreational purposes and the owner
12 provides notice in the manner provided by subsection (8) of this section, the
13 immunities provided by ORS 105.682 apply to the remainder of the owner’s
14 land.

15 “(5) The immunities provided by ORS 105.682 for gardening do not apply
16 if the owner charges more than \$25 per year for the use of the land for
17 gardening. If the owner charges more than \$25 per year for the use of the
18 land for gardening, the immunities provided by ORS 105.682 apply to any use
19 of the land other than gardening. If the owner charges more than \$25 per
20 year for permission to use a specific part of the owner’s land for gardening
21 and the owner provides notice in the manner provided by subsection (8) of
22 this section, the immunities provided by ORS 105.682 apply to the remainder
23 of the owner’s land.

24 “(6) The immunities provided by ORS 105.682 for woodcutting do not apply
25 if the owner charges more than \$75 per cord for permission to use the land
26 for woodcutting. If the owner charges more than \$75 per cord for the use of
27 the land for woodcutting, the immunities provided by ORS 105.682 apply to
28 any use of the land other than woodcutting. If the owner charges more than
29 \$75 per cord for permission to use a specific part of the owner’s land for
30 woodcutting and the owner provides notice in the manner provided by sub-

1 section (8) of this section, the immunities provided by ORS 105.682 apply to
2 the remainder of the owner’s land.

3 “(7) The immunities provided by ORS 105.682 for the harvest of special
4 forest products do not apply if the owner makes any charge for permission
5 to use the land for the harvest of special forest products. If the owner
6 charges for permission to use the owner’s land for the harvest of special
7 forest products, the immunities provided by ORS 105.682 apply to any use of
8 the land other than the harvest of special forest products. If the owner
9 charges for permission to use a specific part of the owner’s land for har-
10 vesting special forest products and the owner provides notice in the manner
11 provided by subsection (8) of this section, the immunities provided by ORS
12 105.682 apply to the remainder of the owner’s land.

13 “(8) Notices under subsections (4) to (7) of this section may be given by
14 posting, as part of a receipt, or by such other means as may be reasonably
15 calculated to apprise a person of:

16 “(a) The limited uses of the land for which the charge is made, and the
17 immunities provided under ORS 105.682 for other uses of the land; or

18 “(b) The portion of the land the use of which is subject to the charge, and
19 the immunities provided under ORS 105.682 for the remainder of the land.

20 **“SECTION 7. (1) The amendments to ORS 105.668, 105.672 and 105.688**
21 **by sections 1 to 3 of this 2024 Act apply to actions for personal injury,**
22 **death or property damage commenced on or after the effective date**
23 **of this 2024 Act, and before January 1, 2026.**

24 **“(2) The amendments to ORS 105.668, 105.672 and 105.688 by sections**
25 **4 to 6 of this 2024 Act become operative on January 2, 2026, and apply**
26 **to actions for personal injury, death or property damage commenced**
27 **on or after January 2, 2026.**

28 **“(3) An ordinance, resolution, rule, order or other regulation under**
29 **ORS 105.668 (3) that is adopted by a local government other than a city**
30 **or county is not effective after January 2, 2026.**



ALEX CUYLER

Intergovernmental Relations Manager
Alex.Cuyler@lanecountyor.gov

DATE: February 8, 2024
TO: Senate Committee on Judiciary
FROM: Alex Cuyler, Lane County Intergovernmental Relations Manager
RE: SB 1576, relating to civil matters

Chair Prozanski, Vice Chair Thatcher, and members of the Judiciary Committee:

The Lane County Board of Commissioners adopt a series of Legislative Priorities in advance of each Legislative Assembly, including:

- Ensure recreational immunity statutes are refined given *Fields v Newport*.

SB 1576 and the proposed dash 3 amendment are aligned with this principle, and for this reason, we are supportive of SB 1576 and ask that the Committee schedule this bill for a work session to move the dash 3 amendment into the bill and move the amended measure to the floor of the Senate with a DO PASS recommendation.

Lane County operates a Parks Division within our Department of Public Works. Just last year, Lane County voters approved a first ever Parks Levy designed to use five years of increased property taxes to invest in County Parks. What they didn't vote for was increased litigation relating to parks and the use of their tax dollars to defend against parks related litigation.

We believed we had settled the issue of recreational immunity with the passage of both HB 2003 in 2009 and HB 3673 in 2010, both of which Lane County advocated for. We did not expect then that the term "recreational purposes" would be challenged in court, much less become the pivotal rationale behind an award for damages. We certainly appreciate the Committee for revisiting this issue and for hearing the dash 3 amendment today.

Unlike some park systems, Lane County did not close any trails or reduce any access to our parkland. We did become aware of property owners closing access to public trails, however, due to threat created by the recent Circuit Court decision in Lincoln County. We are aware that the dash 3 will sunset such that a renewed discussion on this issue can be evolved for the 2025 long session and that is fine by Lane County. We will be eager to participate in those conversations.

ELECTRONICALLY SUBMITTED BY ALEX CUYLER



The Oregon Public Use of Lands Act passed in 1995 with a goal of encouraging public and private owners of land to make their land available to the public for recreational purposes. It was understood that landowners, both public and private, who made their land available without charge for recreational use by the public were not liable if a person was injured while using the land for recreational purposes.

The Act increased the availability of land for free recreation by limiting liability to cities, counties, parks, schools and a wide range of private owners, including farmers and timber companies that allow hunters, anglers, hikers, mountain bikers and other members of the public to use or traverse their lands at no charge.

However, a recent court decision has led to closure of some Oregon parks and recreation properties, insurers urging closures due to liability, and all Oregonians at risk of losing access to trails statewide. In order to make sure citizens can enjoy trails and parks this year, we need an immediate solution to this problem. We must adjust Oregon's long standing recreational immunity statute to assure the legislature's policy goal in ORS 105.676 is realized.

ORS 105.676: The Legislative Assembly hereby declares it is the public policy of the State of Oregon to encourage owners of land to make their land available to the public for recreational purposes, for gardening, for woodcutting and for the harvest of special forest products by limiting their liability toward persons entering thereon for such purposes and by protecting their interests in their land from the extinguishment of any such interest or the acquisition by the public of any right to use or continue the use of such land for recreational purposes, gardening, woodcutting or the harvest of special forest products.

The Court decision:

- Plaintiff sustained injuries when she slipped and fell on land owned by the City of Newport.
- Specifically, she fell on a wooden bridge that is a part of the city's "Ocean to Bay Trail" while walking her dog to the beach to engage in recreation there.
- The initial court dismissed her personal injury claim against the city after the trial court granted summary judgment in favor of the city on its recreational immunity defense.
- **But two issues arose in appeal: 1) whether the walk on the trail was recreation, and 2) whether the trail even falls under recreational immunity statute.**
- The plaintiff argued that there are issues of material fact concerning her use of the city's land and a jury could conclude that her purpose was not principally recreational, and that her injuries did not arise out of the recreational use of the city's land, defeating the city's recreational immunity defense.
- Plaintiff also argued that ORS 105.688(1)(c) extends recreational immunity only to unimproved access trails, and because the city improved, designed, and maintained the trail for the purpose of accessing the beach, the city is not entitled to recreational immunity.
- The court agreed that issues of material fact exist about plaintiff's use of the trail and that the city was not entitled to prevail on its recreational immunity defense as a matter of law. They also agree that the Ocean to Bay Trail is not an unimproved access trail entitled to immunity

under ORS 105.688(1)(c). But whether recreational immunity otherwise applies to the trail as land adjacent to the ocean shore under ORS 105.688(1)(a) depends on plaintiff's purpose in using the land and material issues of fact exist on that question.

- So, they reversed and remanded back to lower court to decide case.

Legislative Solution: SB 1576 -3 amendments

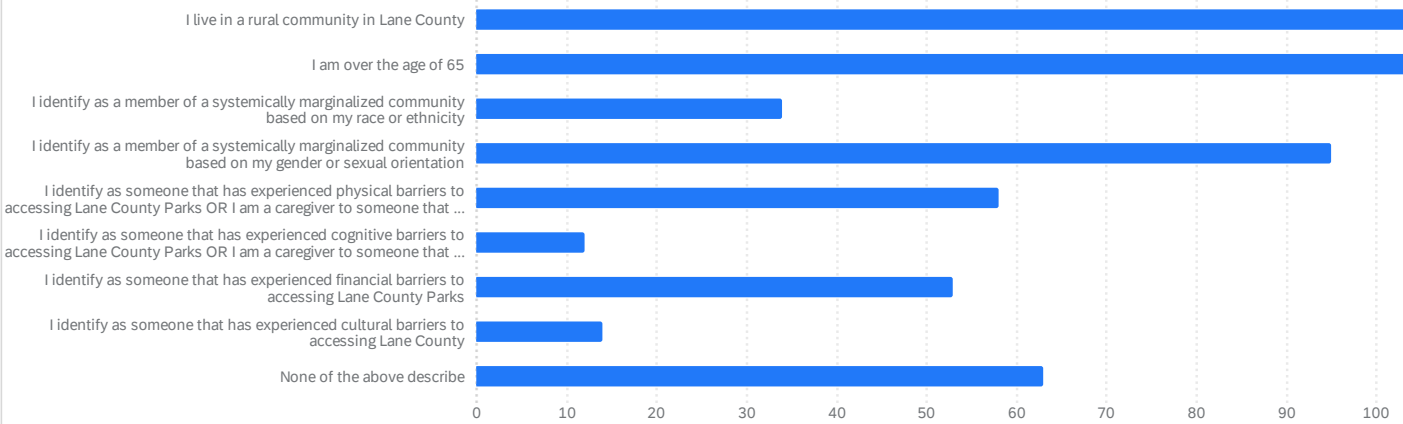
- 2024 Legislative Session: Advocate for legislative language that adds “walking, running, and biking” to the definition of recreational purposes (ORS 105.672) and adds improved trails to the recreational immunity provided via ORS 105.688.
- 2024 Interim: Pursue a more comprehensive fix to the recreational immunity statutes with all stakeholders at the table to be introduced in the 2025 legislative session.

Help us keep trails open to the public by supporting this needed clarification of legislative intent.

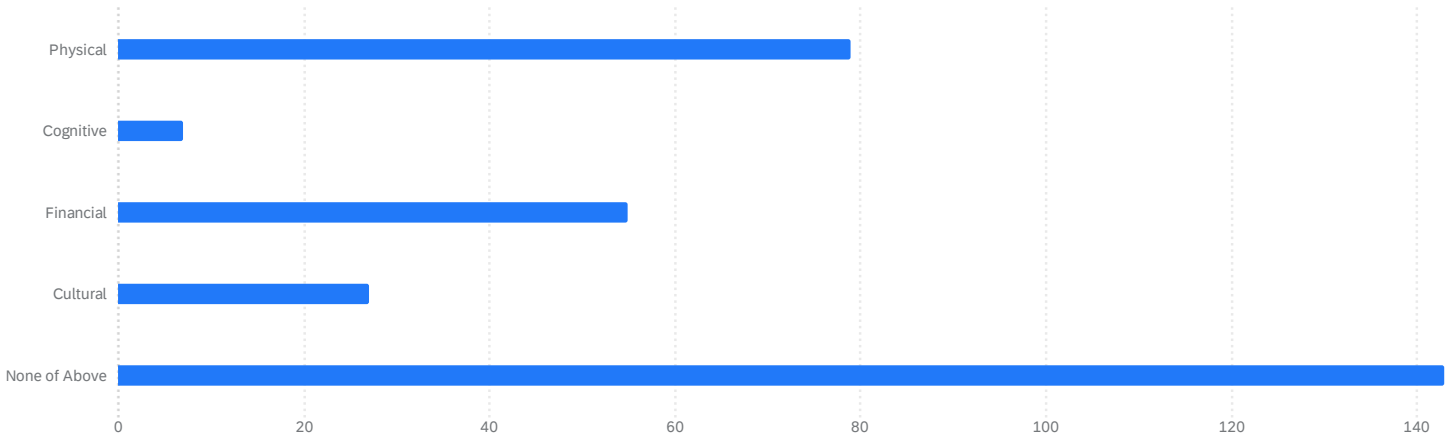


Contact: Cindy Robert, Oregon Recreation & Park Association, 503-260-3431
Cindy@rainmakersgovernmentstrategies.com

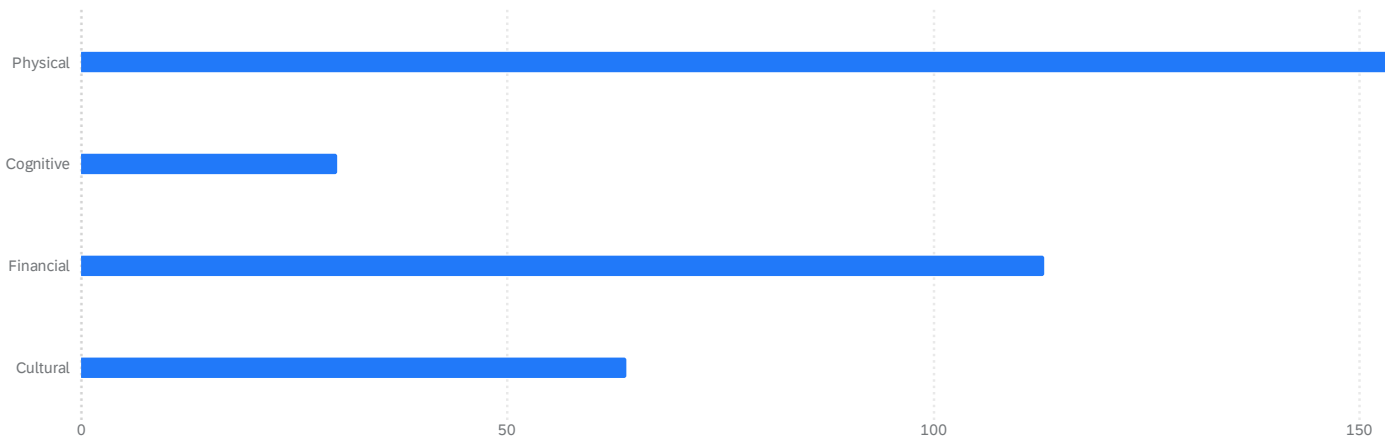
Please SELECT ALL that apply to you. 311 ⓘ



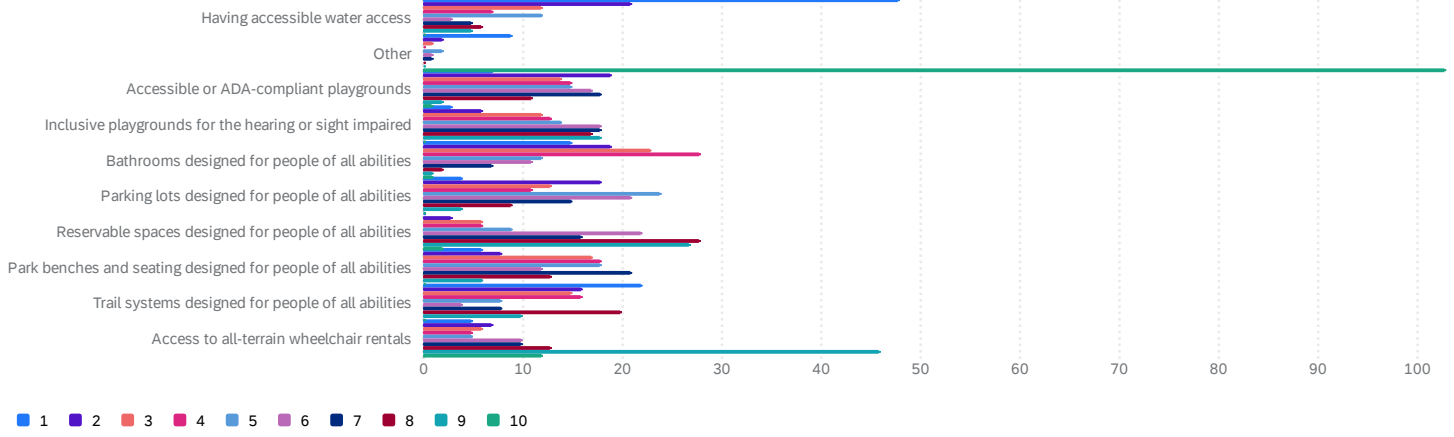
Which identified barrier has the greatest impact on your access to Lane County Parks? 311 ⓘ



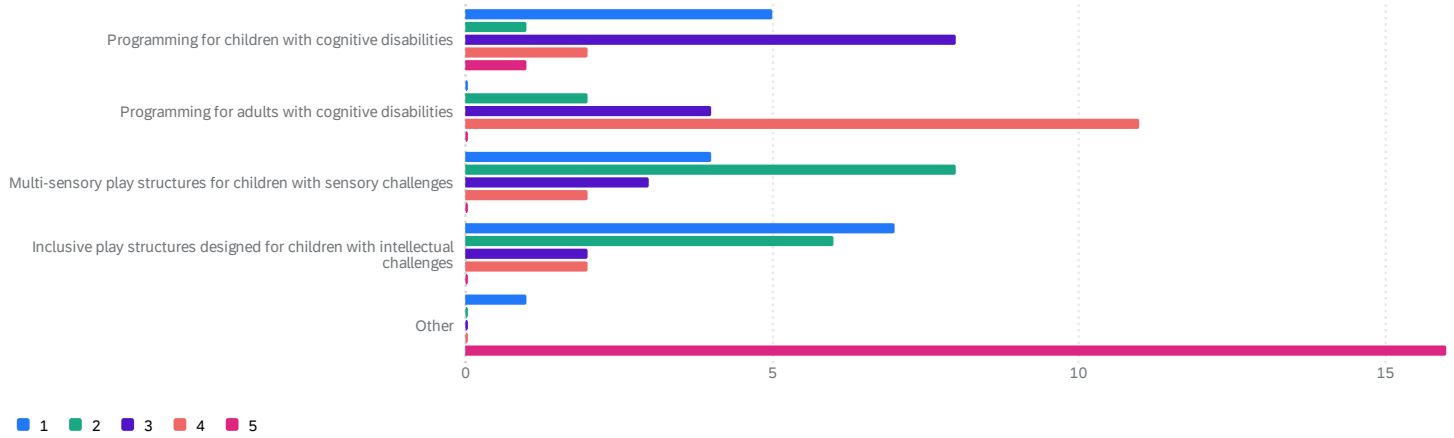
Please select AT LEAST on barrier that you want to give feedback on 311 ⓘ



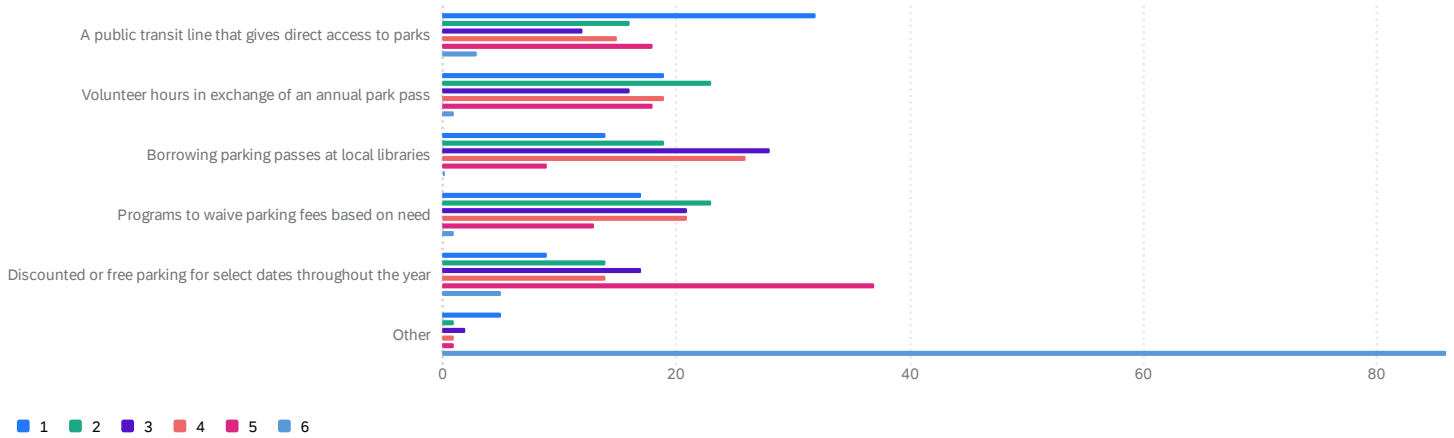
Please RANK the projects that address physical barriers 119 ⓘ



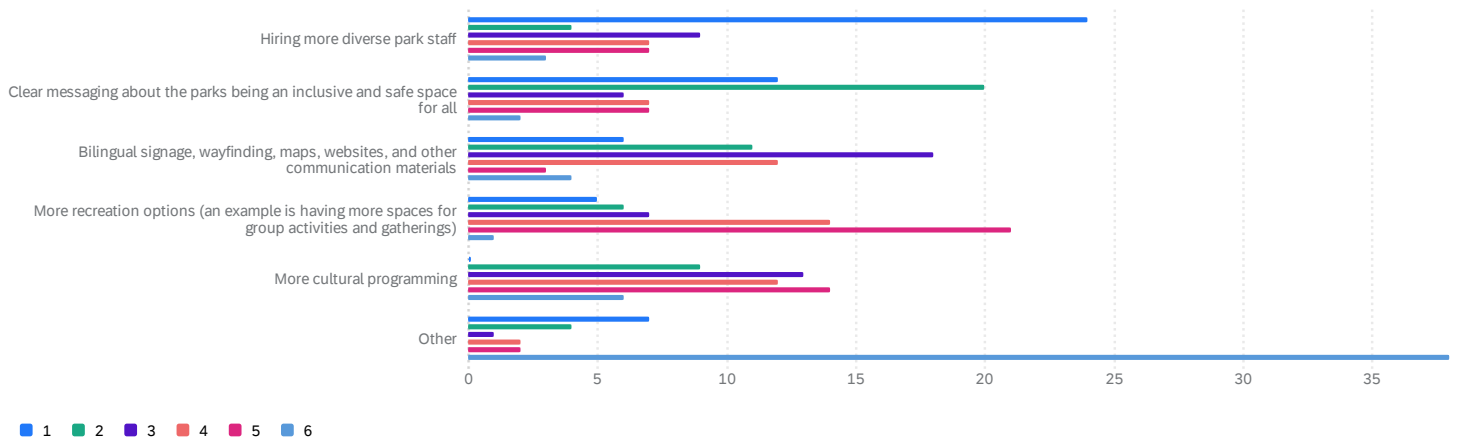
Please RANK the projects that address cognitive barriers 17 ⓘ



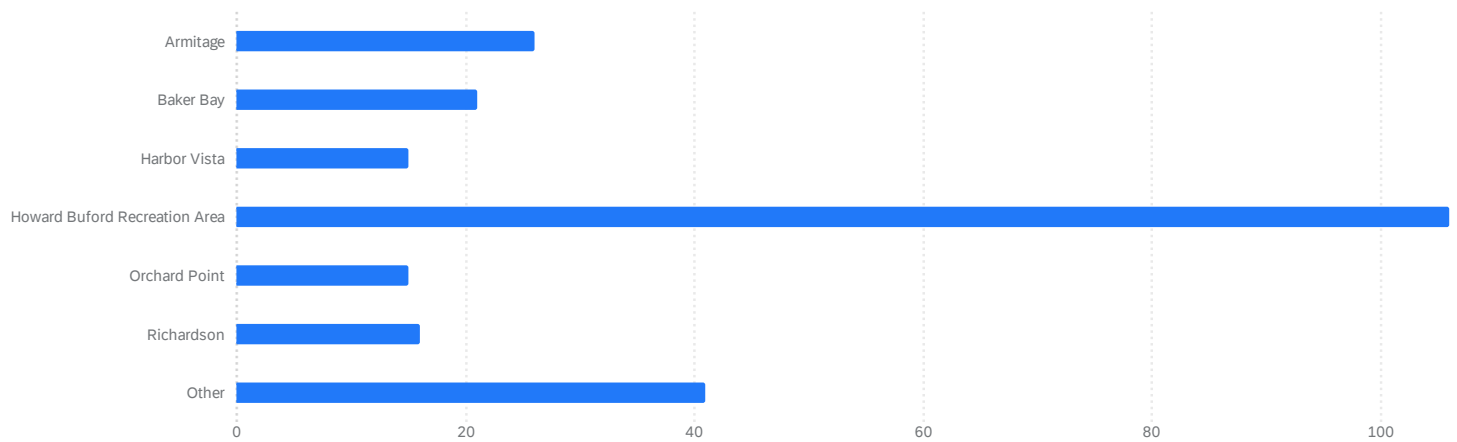
Please RANK the projects that address financial barriers 96 ⓘ



Please RANK the projects that address cultural barriers 54 ⓘ



Which Lane County Parks do you visit most often? 240 ⓘ



- Osgood

- Deerhorn

- Zumwalt

- Zumwalt

- Skinner Butte Park, Spencer Butte, Alton Baker, Hendricks Parkno

- Leaburg

- McKenzie River Access

- none

Lane County Parks Operations Report

February 2023



The purpose of this report is to provide a summary of operational highlights for the month of February.

Coast Zone

- Ice storm damage clean-up
- Plumbing repair at Linslaw Park
- General Maintenance runs

Valley Zone

- Ice storm damage clean-up
- Leaf removal within valley parks
- Replaced deck boards on Richardson Marina floating dock
- Replaced deck boards and repaired courtesy dock at Richardson day-use area
- General Maintenance runs

Lane County Parks Natural Areas Operations Report for February 2024

Ed Alverson, Natural Areas Coordinator

Ice Storm Recovery: Responding to the January 13-15 ice storm was again a major focus this month. In addition to participating in ongoing coordination with partners and visiting parks to assess damage levels, at several parks I worked with contractors to develop scopes of work for assessment and debris clean-up contracts.

HBRA North Trailhead Kiosks: We are now in the final stages of the kiosk panel design process; I worked with the Sea Reach designer to select plants and animals to create drawings of and make a few last adjustments to the kiosk maps.

HBRA Trails: I met several times this month with a UO Landscape Architecture student who is working on a project on providing accessible trails and trail experiences in the North Bottomlands.

Stakeholder Meetings: I facilitated the monthly HBRA stakeholder meeting and participated in a project meeting for the HBRA Waterway Access project. I also organized and facilitated a meeting of stewards of conservation lands in the Mt. Pisgah/Middle Fork/Coast Fork confluence area to management of discuss priority invasive species.

Eagle Rock Park: We are still waiting for RTCA staff and contractors to compile the final documents. Assuming that the expected report will arrive soon, a group of parks staff have been working on advancing the first phase of Eagle Rock improvements, which will involve purchasing and installing a 16 x 24 ft. covered shelter.

Armitage Park: I participated in ongoing meetings about the water and sewer systems. Rebecca and I visited the east side of the park to look at storm damage to the wildflower (shooting stars etc.) habitat and plan for a project to redesign that part of the park to improve visitor experience and better manage the wildflower habitat.

Zumwalt Park Shoreline Stabilization: Shoreline erosion in Zumwalt Park continues to be a hot topic. Parks staff did a site visit with Corps staff, and the discussions have led to plans to have the Corps contract with Walama Restoration in March to do a test installation of straw bales and willow stakes along the eroding shoreline. I was able to provide photos of the project area taken when the reservoir was full to help determine water levels in the field and determine the appropriate planting zone.

Blue Mountain Park: I have been working with staff from the Al Kennedy school to implement a reforestation project in an upland area of Blue Mountain Park where blackberry and scotch broom have been removed as part of a fuels reduction project. This month the students planted about 200 seedlings over about an acre of cleared ground.

Project Planning and Coordination: I participated in a Rivers to Ridges acquisition subcommittee meeting, and a quarterly meeting of the Community Wildfire Protection Plan Advisory Committee meeting. Several other Parks staff and I met with the Public Works Stormwater work group to get updates on stormwater and erosion permitting processes and opportunities for project-specific collaboration.